

## Supplementary Material File 2: Illustrations of the EO4Kigali.shp dataset

# Building Stock and Building Typology of Kigali, Rwanda

Felix Bachofer <sup>1,2,\*</sup>, Andreas Braun <sup>2</sup>, Florian Adamietz <sup>2</sup>, Sally Murray <sup>3</sup>, Pablo d'Angelo <sup>1</sup>, Edward Kyazze <sup>4</sup>, Abias Philippe Mumuhire <sup>5</sup> and Jonathan Bower <sup>3</sup>

<sup>1</sup> German Aerospace Center (DLR), Earth Observation Center (EOC), 82334 Wessling, Germany

<sup>2</sup> University of Tuebingen, Department of Geosciences, 72070 Tuebingen, Germany

<sup>3</sup> International Growth Centre (IGC), Kigali, Rwanda

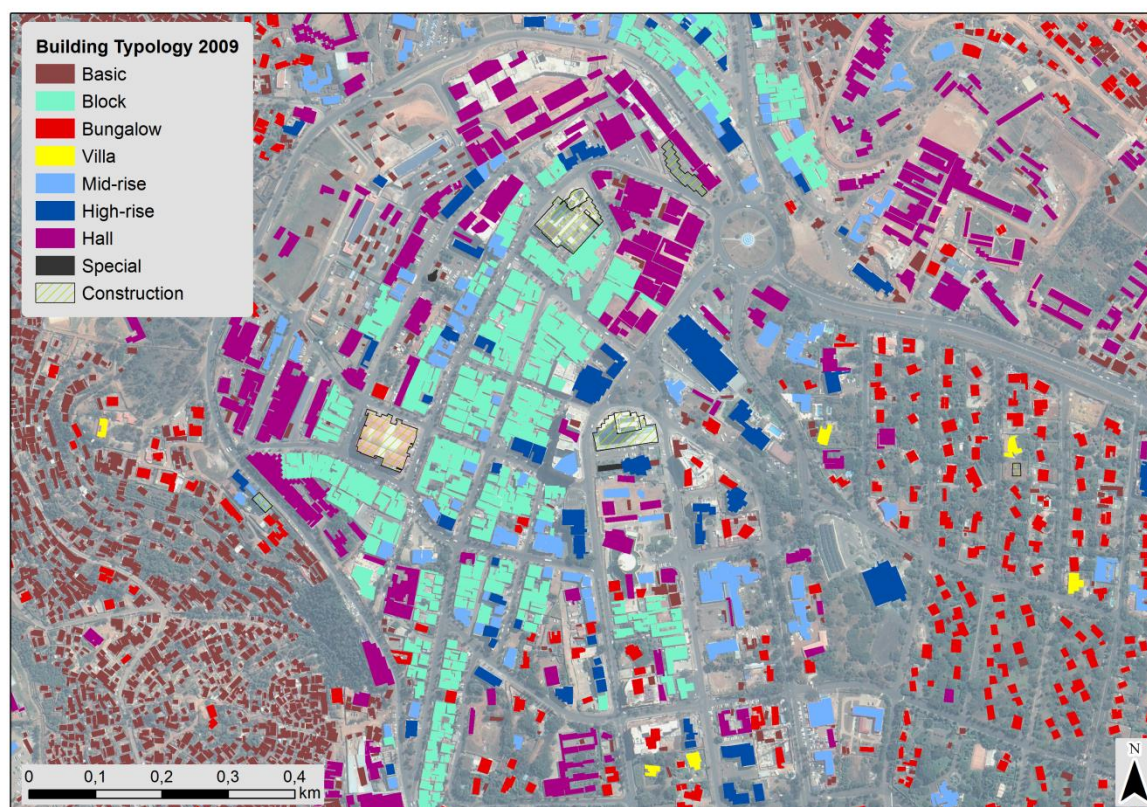
<sup>4</sup> Ministry of Infrastructure (MININFRA), Urbanization and Human settlements Division, Kigali, Rwanda

<sup>5</sup> City of Kigali, Urban Planning and Construction One Stop Center Unit, Kigali, Rwanda

\* Correspondence: felix.bachofer@dlr.de; Tel.: +49-8153-28-3183

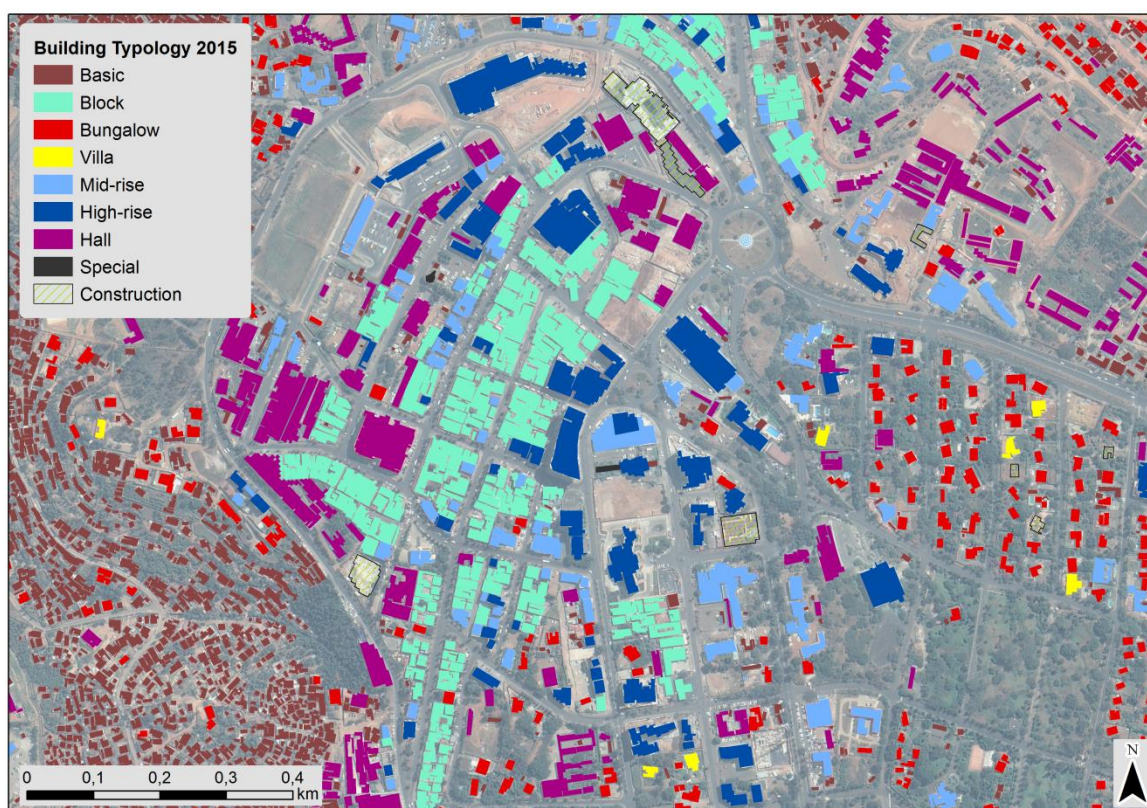
Dataset available at Zenodo (DOI: 10.5281/zenodo.3239271)

Illustrations for the Central Business District (CBD) of Kigali. See Figure 1 of the Data Descriptor Article for the location of the illustrated area.

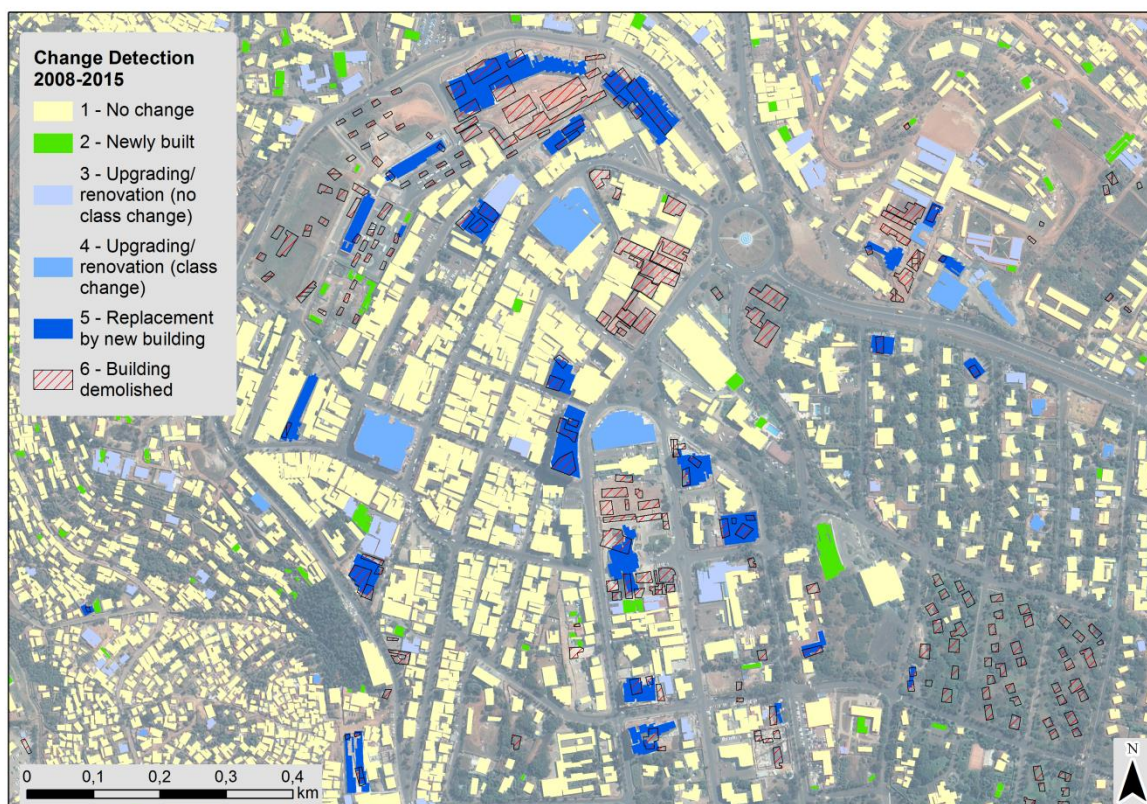


Supplementary Figure 1: Building typology derived of aerial images of 2008-2009.





Supplementary Figure 2: Building typology derived of a Pléiades satellite image of 2015.



Supplementary Figure 3: Change detection of the 2008-2009 and the 2015 building stock.