

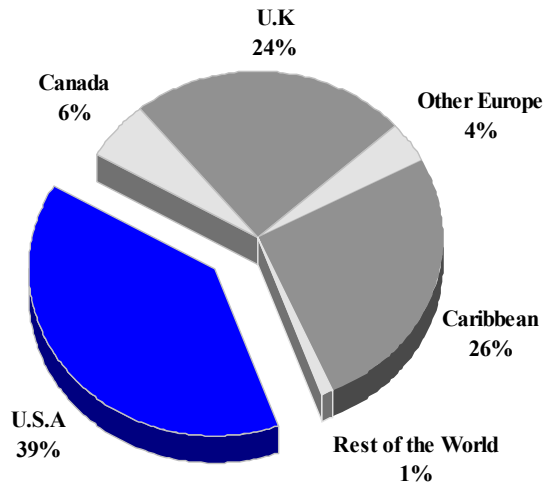
ST. LUCIA

TOURISM HIGHLIGHTS FOR 2006

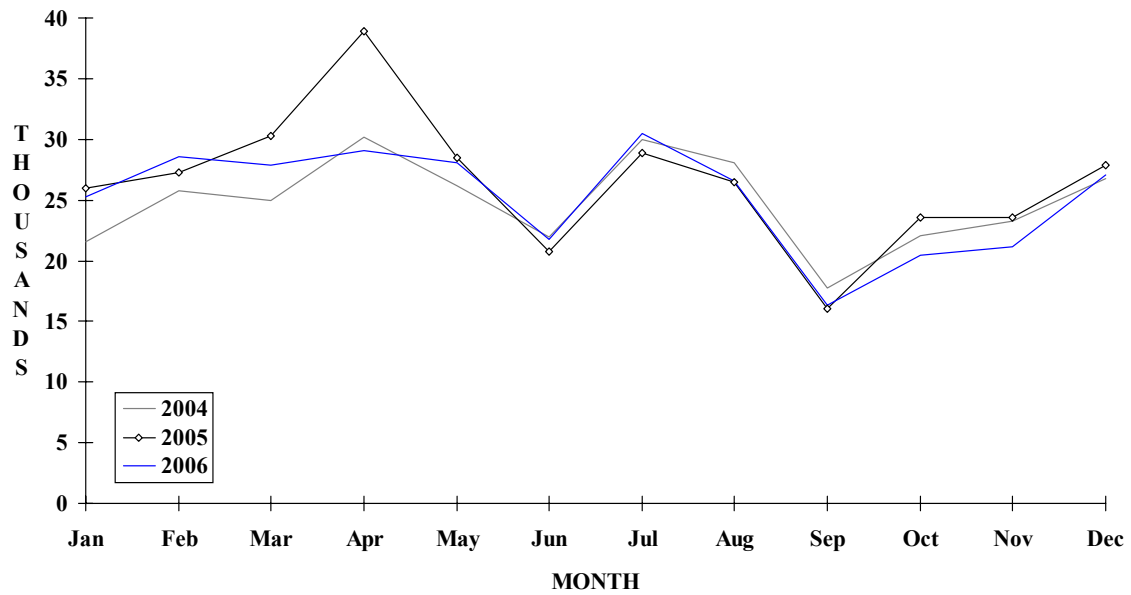
VISITOR ARRIVALS			
Tourist Arrivals ✈	302,510	Cruise Passengers	359,593
➔ <i>Summer</i>	63.4%	➔ <i>Summer</i>	43.0%
➔ <i>Winter</i>	36.6%	➔ <i>Winter</i>	57.0%
Same-day Visitors	7051	Cruise Ship Calls	267
VISITOR PROFILE			
Average Length of Stay (nights)		Tourist Arrivals by Place of Stay	
Tourist Arrivals by Purpose of Visit		➔ <i>Hotels</i>	70.3%
➔ <i>Holiday</i>	91.0%	➔ <i>Guest Houses/Apartments</i>	1.7%
➔ <i>Business</i>	5.0%	➔ <i>Private</i>	10.4%
➔ <i>Other</i>	4.0%	➔ <i>Other</i>	17.6%
TOURISM AND OTHER RELATED ECONOMIC STATISTICS			
Total Expenditure (<i>US\$ millions</i>)	\$325.7	GDP at Factor Cost (<i>US\$millions</i>)	\$635.7
Tourism Budget (<i>US\$ thousands</i>) ^{VIb}	\$6,918	Hotel and Restaurant contribution to GDP	14.8%
		Consumer Price Index (<i>% ch. 2004/'03</i>)	1.4%
ACCOMMODATION STATISTICS		SOCIO-ECONOMIC STATISTICS	
Rooms	3,974	Land Area (<i>square Kilometres</i>)	616
Room Occupancy Rates	64.8%	Population (<i>thousand mid year 2004</i>)	162.4

ST. LUCIA

**TOURIST ARRIVALS BY MAIN MARKETS
2006**



MONTHLY TOURIST ARRIVALS



TOURIST ARRIVALS BY COUNTRY OF RESIDENCE

Country of Residence	2002	2003	2004	2005	2006	% Share 2006
United States	94044	98078	107089	112557	117450	38.8
Canada	12927	13494	15315	16506	17491	5.8
United Kingdom	63277	75426	81370	84725	73312	24.2
Germany	3929	3582	3289	3318	2569	0.8
Other Europe	9492	11185	13203	12343	9684	3.2
Caribbean	66409	70543	74242	84729	78464	25.9
Rest of World	3385	4640	3923	3761	3540	1.2
TOTAL	253463	276948	298431	317939	302510	100.0

MONTHLY TOURIST ARRIVALS

Month	2002	2003	2004	2005	2006	%Change 2006/05
January	25448	24930	21532	25997	25215	-3.0
February	23627	21875	25766	27229	28619	5.1
March	23123	23387	24977	30320	27832	-8.2
April	27661	27993	30131	38901	29024	-25.4
May	23001	25372	26196	28469	28055	-1.5
June	16662	22504	21991	20753	21760	4.9
July	21920	26228	29926	28839	30453	5.6
August	19968	24632	28079	26474	26538	0.2
September	14185	17392	17748	16016	16347	2.1
October	18859	19448	22065	23511	20453	-13.0
November	19612	20665	23214	23538	21153	-10.1
December	19397	22522	26806	27892	27061	-3.0
TOTAL	253463	276948	298431	317939	302510	-4.9

CRUISE PASSENGER ARRIVALS

Month	2002	2003	2004	2005	2006	% Change 2006/05
January	66742	53410	65462	68510	54532	-20.4
February	56352	48736	59660	50938	51877	1.8
March	58120	52224	67887	60392	59119	-2.1
April	41787	44738	55354	49343	39384	-20.2
May	17238	13073	18456	8253	5432	-34.2
June	11072	6786	17667	10264	11069	7.8
July	9509	6756	15099	7099	10410	46.6
August	11706	6790	14574	7050	7000	-0.7
September	8202	8184	20777	10200	10735	5.2
October	18587	25962	18376	10820	11187	3.4
November	29860	54666	54618	53699	40503	-24.6
December	58005	71915	73349	57796	58345	1.0
TOTAL	387180	393240	481279	394364	359593	-8.8

Number of Calls	378	245	262	328	258
------------------------	-----	-----	-----	-----	-----

VISITOR ARRIVALS BY CATEGORY

Category	2002	2003	2004	2005	2006	% Share 2006
Tourists	253463	276948	298431	317939	302510	45.2
Cruise Passenger	387180	393240	481279	394364	359593	53.7
Other Same-day Visitors	7712	12817	11441	7541	7051	1.1
TOTAL	648355	683005	791151	719844	669154	100.0

TOURIST ACCOMMODATION (Rooms)

Type of Accommodation	2002	2003	2004	2005	2006
Hotels	3041	3079	3123	3572	
Apartments	300	57	159	166	
Guest Houses	370	370	405	439	
Villas\Cottages	n.a	243	287	334	
TOTAL	3711	3749	3974	4511	0

Sources: St Lucia Tourist Board and Government Statistical Department

ST. MAARTEN

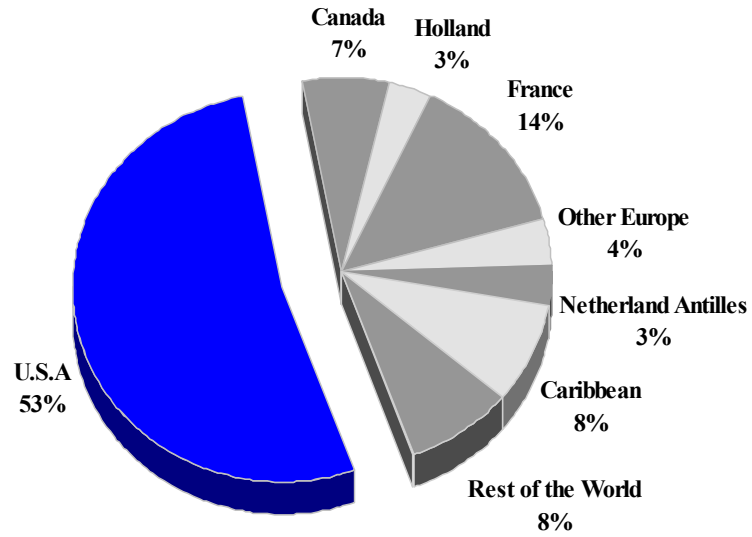
TOURISM HIGHLIGHTS FOR 2006

VISITOR ARRIVALS			
Tourist Arrivals ✈	467,804	Cruise Passengers	1,421,645
➡ <i>Summer</i>	59.2%	➡ <i>Summer</i>	54.5%
➡ <i>Winter</i>	40.8%	➡ <i>Winter</i>	45.5%
Average Length of Stay (<i>nights</i>)	n.a.	Cruise Ship Calls	666
TOURISM AND OTHER RELATED ECONOMIC STATISTICS			
Total Expenditure (<i>US\$ millions</i>) *	\$612.8	Consumer Price Index (<i>%ch 2004/'03</i>)	2.1%
Tourism Budget (<i>US\$ thousands</i>) ^b	\$5,003		
ACCOMMODATION STATISTICS		SOCIO-ECONOMIC STATISTICS	
Rooms ^{II}	3,532	Land Area (<i>square Kilometres</i>)	34
Room Occupancy Rates	59.3%	Population (<i>thousand mid year 2004</i>)	33.2

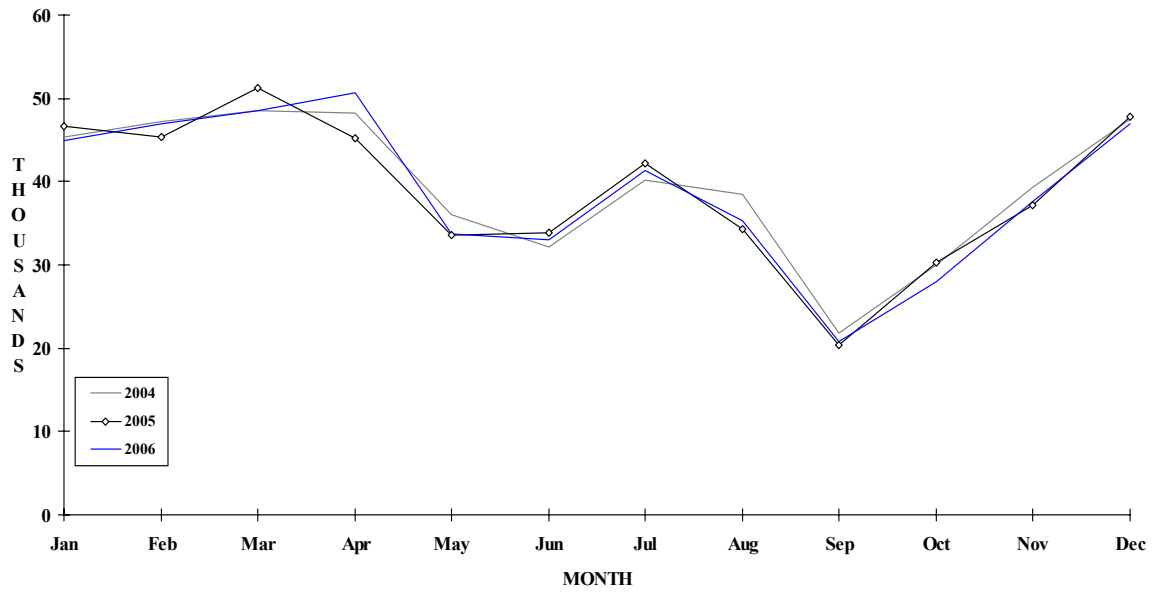
* Includes Visitor Expenditure for Saba and St. Eustatius

ST. MAARTEN

TOURIST ARRIVALS BY MAIN MARKETS 2006



MONTHLY TOURIST ARRIVALS



TOURIST ARRIVALS BY NATIONALITY*

Nationality	2002	2003	2004	2005	2006	% Share 2006
United States	191908	222247	251156	246858	246064	52.6
Canada	23460	29545	31667	34506	30646	6.6
Holland	9187	12918	15554	15441	15842	3.4
France**	62457	58801	62109	60524	63475	13.6
Other Europe	15503	16540	18740	17856	17741	3.8
Neth. Antilles	13475	14742	15505	16650	15746	3.4
Other Caribbean	33371	39913	44906	40426	39034	8.3
Rest of World	31440	32881	35394	35600	39256	8.4
TOTAL	380801	427587	475031	467861	467804	100.0

*By air, including persons destined for St Martin (the French side of the island); Excludes inter-Antillean arrivals

**Includes citizens of the French West Indies.

MONTHLY TOURIST ARRIVALS*

Month	2002	2003	2004	2005	2006	% Change 2006/05
January	34247	39441	45348	46632	44945	-3.6
February	35012	38927	47277	45338	46890	3.4
March	42535	40297	48575	51264	48515	-5.4
April	37382	40344	48248	45246	50643	11.9
May	25734	31833	36054	33578	33782	0.6
June	29789	30845	32197	33816	32962	-2.5
July	31040	36133	40203	42150	41273	-2.1
August	31986	36380	38499	34245	35311	3.1
September	19330	19613	21757	20387	20885	2.4
October	25809	29445	30009	30309	28056	-7.4
November	32111	38194	39293	37150	37550	1.1
December	35826	46135	47571	47746	46992	-1.6
TOTAL	380801	427587	475031	467861	467804	0.0

*Arrivals at Juliana Airport (includes visitors destined for St Martin)

CRUISE PASSENGER ARRIVALS

Month	2002	2003	2004	2005	2006	% Change 2006/05
January	118939	134540	147680	178231	165773	-7.0
February	101410	117452	141009	164100	157220	-4.2
March	112664	121033	158411	182012	176707	-2.9
April	91992	122066	133212	150387	146473	-2.6
May	54643	60364	75237	79501	89624	12.7
June	59847	52064	87210	77829	69248	-11.0
July	73250	65496	80113	74366	66864	-10.1
August	69138	62565	61555	69554	74942	7.7
September	57617	50126	40933	63183	63630	0.7
October	78457	70740	81510	116473	82239	-29.4
November	105529	142956	154391	172452	158110	-8.3
December	131554	172332	187189	160373	170815	6.5
TOTAL	1055040	1171734	1348450	1488461	1421645	-4.5

Number of Calls	507	531	597	666	641
------------------------	-----	-----	-----	-----	-----

TOURIST ACCOMMODATION (Rooms)

Type of Accommodation	2002	2003	2004	2005	2006
Hotels	n.a	n.a	n.a	n.a	
Guest Houses	n.a	n.a	n.a	n.a	
Villas/Condos/Apartments	n.a	n.a	n.a	n.a	
Other	n.a	n.a	n.a	n.a	
Total	3548	3532	n.a	n.a	

Note: The number of rooms in French St Martin was 2903 in 1995 (See Guadeloupe)
Source: St. Maarten Tourist Bureau

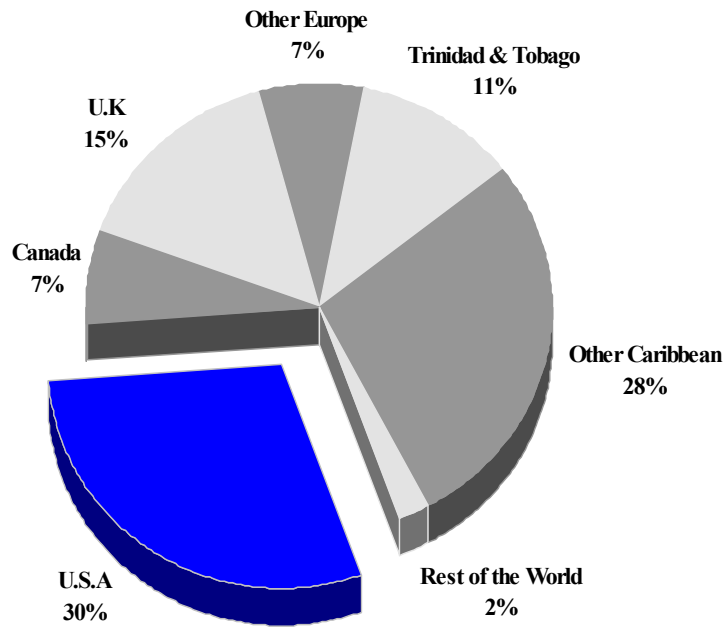
ST VINCENT AND THE GRENADINES

TOURISM HIGHLIGHTS FOR 2006

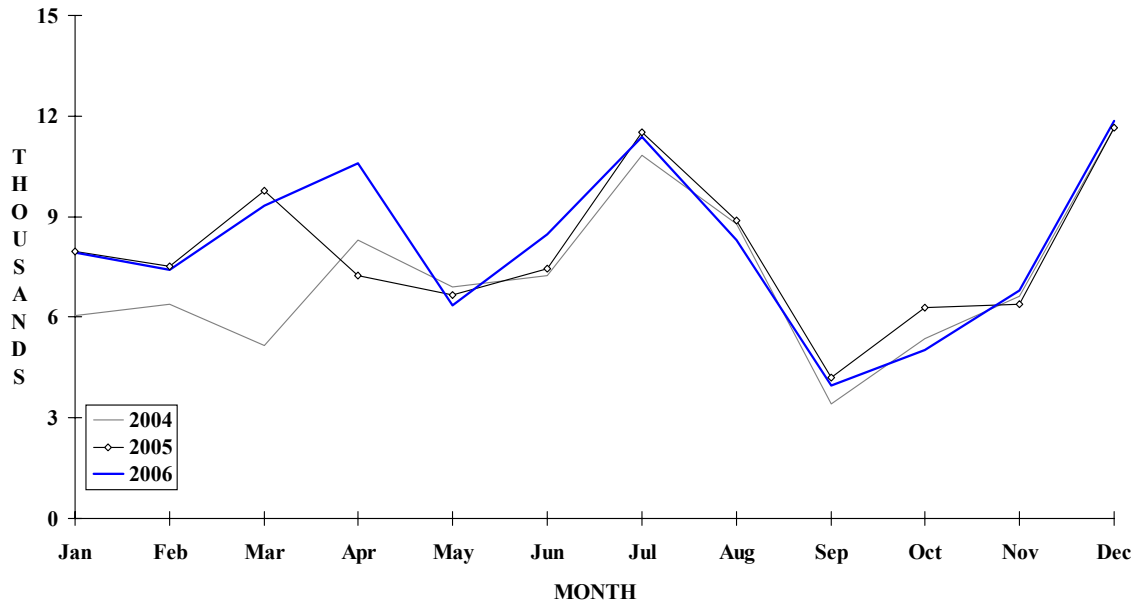
VISITOR ARRIVALS			
Tourist Arrivals →	97,432	Cruise Passengers	106,474
→ <i>Summer</i>	63.8%	→ <i>Summer</i>	41.1%
→ <i>Winter</i>	36.2%	→ <i>Winter</i>	58.9%
		Yacht Passengers	109,581
VISITOR PROFILE			
Average Length of Stay (<i>nights</i>)	n.a	Tourist Arrivals by Place of Stay	
Tourist Arrivals by Purpose of Visit		→ <i>Hotels</i>	46.6%
→ <i>Holiday</i>	60.8%	→ <i>Guest House/Apartment</i>	9.7%
→ <i>Business</i>	16.7%	→ <i>Private</i>	0.0%
→ <i>Other</i>	22.5%	→ <i>Other</i>	34.8%
TOURISM AND OTHER RELATED ECONOMIC STATISTICS			
Total Expenditure (<i>US\$ millions</i>)	\$95.6	GDP at Factor Cost (<i>US\$ millions</i>)	\$337.6
Tourism Budget (<i>US\$ thousand</i>) ^b	\$3,474	Consumer Price Index (<i>%ch. 2003/'02</i>)	0.3%
		Hotel and Restaurant contribution to GDP	2.2%
ACCOMMODATION STATISTICS		SOCIO-ECONOMIC STATISTICS	
Rooms	1,778	Land Area (<i>square Kilometres</i>)	389.0
		Population (<i>thousand mid year 2004</i>)	100.6

ST. VINCENT & THE GRENADINES

**TOURIST ARRIVALS BY MAIN MARKETS
2006**



MONTHLY TOURIST ARRIVALS



ST VINCENT AND THE GRENADINES

TOURIST ARRIVALS BY COUNTRY OF RESIDENCE

Country of Residence	2002	2003	2004	2005	2006	% share 2006
United States	22412	22194	25106	27153	28598	29.4
Canada	5268	4918	5219	6187	6542	6.7
United Kingdom	11631	11547	12610	13941	14837	15.2
Other Europe	6366	5655	6042	5987	7124	7.3
Trinidad & Tobago	8975	9654	10194	11683	11002	11.3
Other Caribbean	21254	23121	25819	28261	27217	27.9
Rest of World	1725	1446	1737	2292	2112	2.2
TOTAL	77631	78535	86727	95504	97432	100.0

MONTHLY TOURIST ARRIVALS

Month	2002	2003	2004	2005	2006	% Change 2006/05
January	5486	5417	6038	7963	7943	-0.3
February	5614	4009	6394	7515	7404	-1.5
March	8452	6175	5165	9764	9345	-4.3
April	5693	6987	8307	7255	10581	45.8
May	5081	5549	6891	6670	6359	-4.7
June	6043	7077	7249	7444	8470	13.8
July	11378	10106	10822	11514	11373	-1.2
August	6852	8142	8790	8871	8316	-6.3
September	3373	3473	3425	4191	3951	-5.7
October	5087	5238	5379	6271	5039	-19.6
November	5175	5508	6627	6400	6789	6.1
December	9397	10854	11640	11646	11862	1.9
TOTAL	77631	78535	86727	95504	97432	2.0

ST VINCENT AND THE GRENADINES

CRUISE PASSENGER ARRIVALS*

Month	2002	2003	2004	2005	% Change	
					2006	2006/05
January	16619	9718	15712	8979	18827	109.7
February	12681	7173	12906	7909	19712	149.2
March	14069	11403	15027	13257	15393	16.1
April	7729	4977	12310	3764	8766	132.9
May	954	689	744	287	422	47.0
June	1057	609	375	231	212	-8.2
July	973	1250	743	153	240	56.9
August	887	807	144	75	120	60.0
September	469	182	196	82	180	119.5
October	2161	2127	2784	2501	1644	-34.3
November	6136	8314	8246	11735	16701	42.3
December	6579	17359	8398	20780	24257	16.7
TOTAL	70314	64608	77585	69753	106474	52.6

VISITOR ARRIVALS BY FIRST PORT OF ENTRY IN 2006

Port	St. Vincent	Bequia	Mustique	Canouan	Union Island	Total
Air*	64437	3431	5954	4059	14350	92231
Sea**	65079	48652	799	585	34402	149517

* Includes same-day visitors

** Includes Cruiseship and Yacht Passengers

Type of Accommodation	2002	2003	2004	2005	2006
Hotels	988	915	839	826	915
Apartments	334	358	526	526	358
Cottages, Villas,	56	240	249	249	240
Guest Houses	126	167	265	171	265
TOTAL	1504	1680	1879	1772	1778

Source: Department of Tourism, St Vincent and the Grenadines

SURINAME

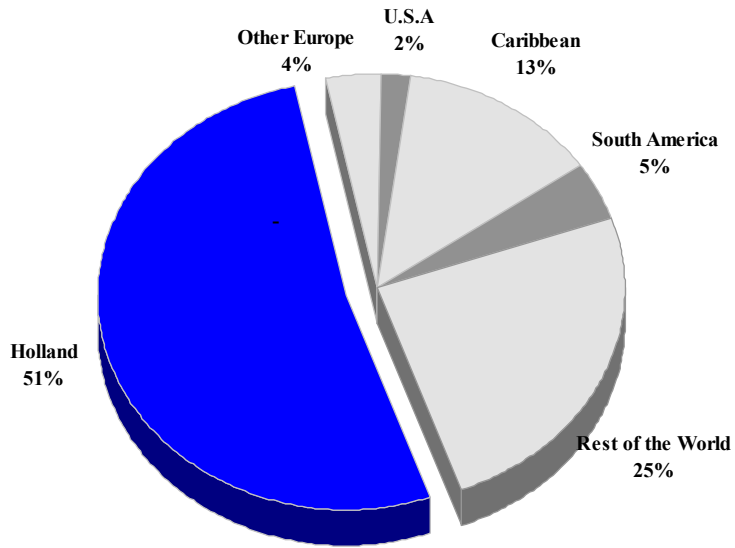
TOURISM HIGHLIGHTS FOR 2006

VISITOR ARRIVALS			
Air Arrivals ^e ✈	152,895	Sea Arrivals	n.a.
VISITOR PROFILE			
Tourist Arrivals by Purpose of Visit		Tourist Arrivals by Place of Stay *	
➡ <i>Holiday</i>	83.8%	➡ <i>Hotels</i>	11%
➡ <i>Business</i>	9.4%	➡ <i>Private/Unregistered</i>	40%
➡ <i>Other</i>	6.8%	➡ <i>Friend/not specified</i>	49%
TOURISM AND OTHER RELATED ECONOMIC STATISTICS			
Total Expenditure (US\$ millions) ^{III}	\$50.0	GDP at Factor Cost (US\$ millions)	\$1,128.1
ACCOMMODATION STATISTICS		SOCIO-ECONOMIC STATISTICS	
Number of rooms ^{VII}	1,276	Land Area (thousand square Kilometres)	163.8
		Population (thousand mid year 2001)	441.4

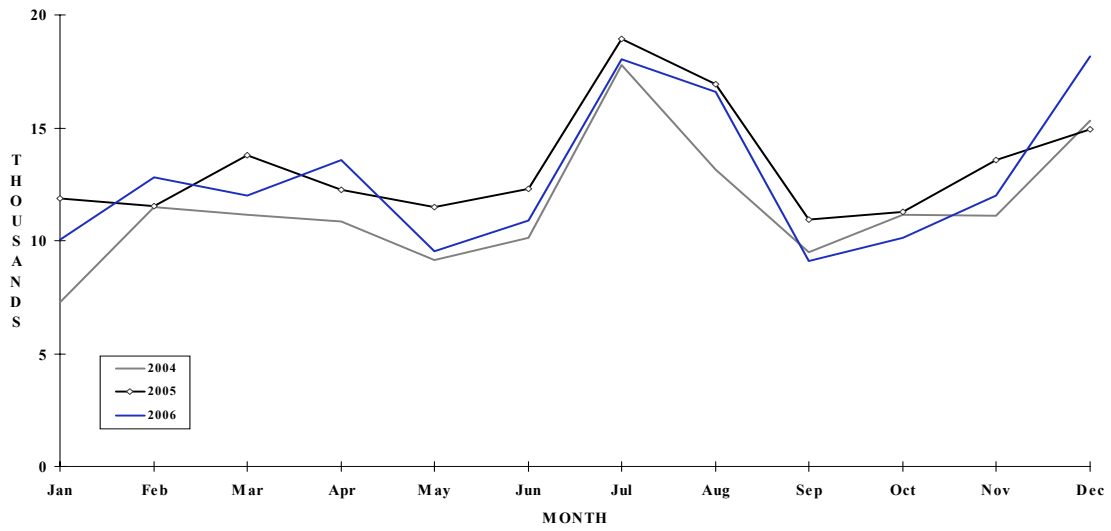
* Based on 2000 visitor survey

SURINAME

**TOURIST ARRIVALS BY MAIN MARKETS
2006**



MONTHLY TOURIST ARRIVALS



SURINAME

VISITOR ARRIVALS BY CATEGORY

Category	2002	2003 ⁿ	2004	2005	2006	% Share 2006
Air Arrivals	n.a	n.a	n.a	n.a		n.a
Sea Arrivals *	n.a	n.a	n.a	n.a		n.a
Total	n.a	n.a	** 96019	188622	n.a	n.a

ⁿ New series

* Arrivals at Nieuw Nickerie Harbour

** June - Dec only

TOURIST AIR ARRIVALS BY NATIONALITY

Country of Residence	2002	2003 ⁿ	2004	2005	2006	% Share 2006
United States	n.a	2442	4465	4673	3411	2.2
Canada	n.a	n.a	0	0	0	0.0
Holland	n.a	48086	82215	93658	91912	60.1
Other Europe	n.a	1276	0	5850	6380	4.2
South America	n.a	7586	4260	6739	7926	5.2
Caribbean	n.a	8469	13573	22540	22854	14.9
Rest of World	n.a	3642	0	26310	20412	13.4
TOTAL	n.a	** 71501	104513	159770	152895	100.0

SURINAME

MONTHLY AIR ARRIVALS*

Month						% Change
	2002	2003 ⁿ	2004	2005	2006	2006/05
January	n.a	n.a.	7286	11852	10056	-15.2
February	n.a	n.a.	11497	11518	12812	11.2
March	n.a	n.a.	11138	13768	12019	-12.7
April	n.a	n.a.	10848	12248	13582	10.9
May	n.a	n.a.	9128	11484	9520	-17.1
June	n.a	12343	10115	12284	10888	-11.4
July	n.a	16567	17784	18934	18035	-4.7
August	n.a	7618	13151	16936	16601	-2.0
September	n.a	4678	9509	10955	9089	-17.0
October	n.a	8317	11142	11266	10143	-10.0
November	n.a	8963	11144	13572	11991	-11.6
December	n.a	12995	15301	14953	18159	21.4
TOTAL	0	71481	138043	159770	152895	-4.3

* Includes Surinamese residents

55093	62272	n.a	-	-
-------	-------	-----	---	---

TOURIST ACCOMMODATION (Rooms)

Type of Accommodation	2002	2003	2004	2005	2006
Hotels	n.a	n.a	n.a	678	
Guest Houses	n.a	n.a	n.a	n.a	
Other	n.a	n.a	n.a	1316	
TOTAL	n.a	n.a	n.a	1994	0

Source: Suriname Tourism Foundation

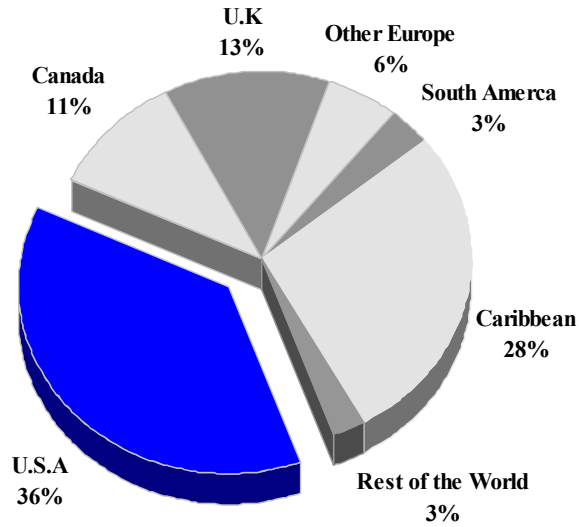
TRINIDAD AND TOBAGO

TOURISM HIGHLIGHTS FOR 2006

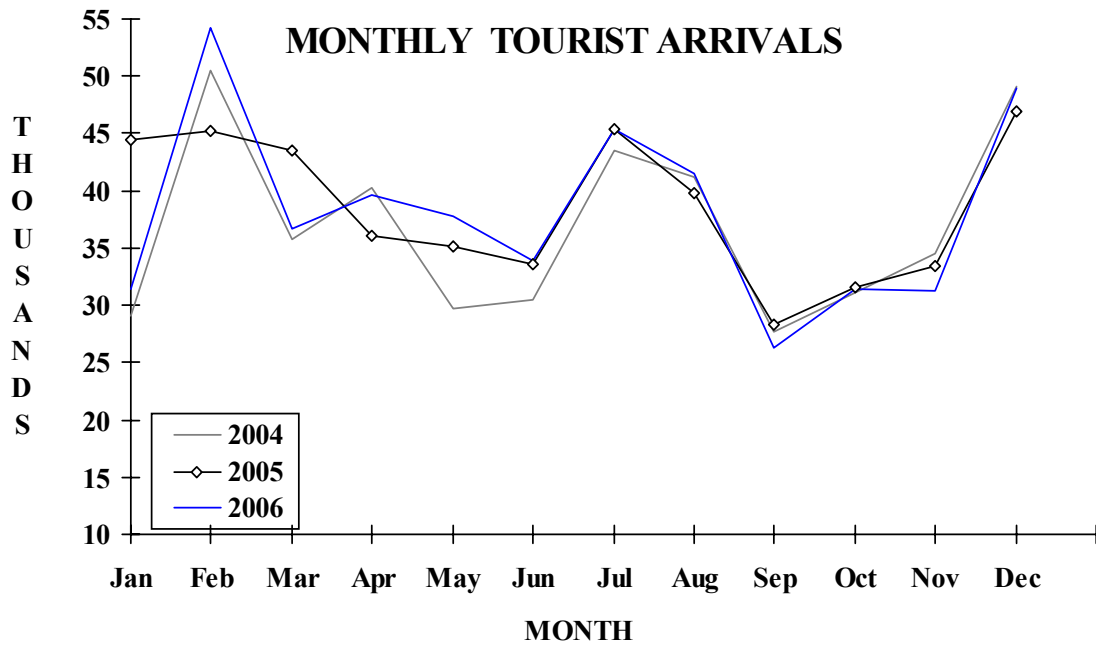
VISITOR ARRIVALS			
Tourist Arrivals ➔	457,387	Cruise Passengers	85,859
➔ <i>Summer</i>	64.8%	➔ <i>Summer</i>	26.7%
➔ <i>Winter</i>	35.2%	➔ <i>Winter</i>	73.3%
VISITOR PROFILE			
Tourist Arrivals by Purpose of Visit		Tourist Arrivals by Place of Stay	
➔ <i>Holiday</i>	67.5%	➔ <i>Hotels</i>	25.3%
➔ <i>Business</i>	19.3%	➔ <i>Apartment/Guest Houses</i>	6.1%
➔ <i>Other</i>	13.2%	➔ <i>Private</i>	59.3%
		➔ <i>Other</i>	9.2%
TOURISM AND OTHER RELATED ECONOMIC STATISTICS			
Total Expenditure (<i>US\$ millions</i>)	\$260.3	GDP at Factor Cost (<i>US\$ millions</i>)	\$11,463.8
Tourism Budget (<i>US\$ thousands</i>) ^{IV}	\$4,117	Consumer Price Index (% ch. 2004/'03)	3.7%
ACCOMMODATION STATISTICS		SOCIO-ECONOMIC STATISTICS	
Rooms ^I	5,929	Land Area (<i>square Kilometres</i>)	5,128
Room Occupancy Rates	52.0%	Population (<i>thousand mid year 2004</i>)	1,294.5

TRINIDAD & TOBAGO

TOURIST ARRIVALS BY MAIN MARKETS 2006



MONTHLY TOURIST ARRIVALS



TRINIDAD AND TOBAGO

TOURIST ARRIVALS BY COUNTRY OF RESIDENCE

Country of Residence	2002	2003	2004	2005	2006	% Share 2006
United States	133566	138935	159456	167985	171091	37.4
Canada	41506	43036	43565	47702	49152	10.7
United Kingdom	51688	57566	66090	63523	58475	12.8
Other Europe	19445	21670	23422	27913	25587	5.6
South America	14277	14079	14516	14907	15172	3.3
Guyana	22299	22783	22328	22208	23690	5.2
Barbados	33989	37320	35456	35319	31166	6.8
Other Caribbean	60427	66084	69301	73689	71312	15.6
Rest of World	7017	7596	8462	9945	11742	2.6
TOTAL	384214	409069	442596	463191	457387	100.0

* Includes missing data for South America and the remaining Europe and Caribbean.

MONTHLY TOURIST ARRIVALS

Month	2002	2003	2004	2005	2006	% Change 2006/05
January	30335	25809	29049	44503	31481	-29.3
February	40193	46408	50478	45294	54255	19.8
March	31785	30500	35757	43498	35670	-18.0
April	27919	35186	40256	36023	39610	10.0
May	29427	30151	29653	35194	37779	7.3
June	28662	29286	30534	33539	33948	1.2
July	41061	42112	43518	45307	45372	0.1
August	37489	38841	41167	39802	41457	4.2
September	22832	25557	27635	28287	26260	-7.2
October	27443	31023	31081	31517	31421	-0.3
November	28224	30053	34440	33372	31220	-6.4
December	38844	44143	49028	46855	48914	4.4
TOTAL	384214	409069	442596	463191	457387	-1.3

TRINIDAD AND TOBAGO

CRUISE PASSENGER ARRIVALS

Month	2002	2003	2004	2005	2006	% Change 2006/05
January	11898	8954	9027	9673	19684	103.5
February	12988	8354	7255	10249	18791	83.3
March	10636	7895	8551	11686	13852	18.5
April	5419	8274	3729	6766	10570	56.2
May	125	69	85	72	0	-100.0
June	34	84	0	53	0	-
July	2757	95	0	0	0	-
August	59	69	0	0	0	-
September	0	0	804	0	0	-
October	1862	2031	1066	105	182	73.3
November	5511	6150	9159	10085	10564	4.8
December	8758	13557	14578	18597	12216	-34.3
TOTAL	60047	55532	54254	67286	85859	27.6

Number of Calls	96	88	86	n.a	94
-----------------	----	----	----	-----	----

TOURIST ACCOMMODATION BY AREA (Rooms)

Area	2002	2003	2004	2005	2006
Trinidad	2528	2528	n.a	n.a	n.a
Tobago	2662	3415	n.a	n.a	n.a
TOTAL	5190	5943	n.a	n.a	n.a

By Type of Accommodation (Trinidad & Tobago)

Type of Accommodation	2002	2003	2004	2005	2006
Hotels	n.a	3061	n.a	n.a	n.a
Condos	n.a	671	n.a	n.a	n.a
Guest Houses	n.a	1647	n.a	n.a	n.a
Other	n.a	n.a	n.a	n.a	n.a
TOTAL	4387	5379	n.a	n.a	n.a

Sources: Tourism Development Authority; Central Statistical Office

TURKS AND CAICOS ISLANDS

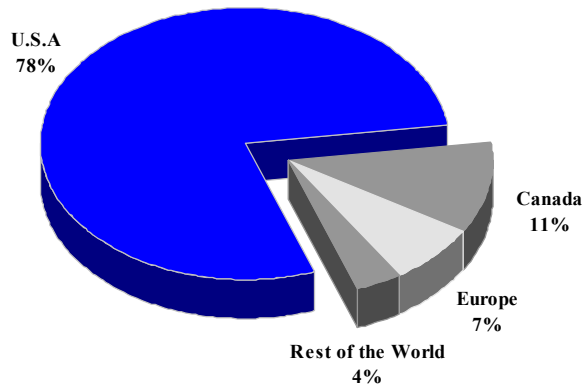
TOURISM HIGHLIGHTS FOR 2004

VISITOR ARRIVALS			
Tourist Arrivals ➔ ➔ <i>Summer</i> * ➔ <i>Winter</i> *	150,579 61.2% 38.8%	Cruise Passenger Arrivals	<u>No Cruise</u>
VISITOR PROFILE			
Average Length of Stay (<i>nights</i>) ¹	7.4	Tourist Arrivals by Place of Stay	
Tourist Arrivals by Purpose of Visit ¹		➔ <i>Hotels</i>	62.1%
➔ <i>Holiday</i>	56.2%	➔ <i>Guest Houses/Apartments</i>	1.3%
➔ <i>Business</i>	36.0%	➔ <i>Private</i>	8.7%
➔ <i>Other</i>	7.8%	➔ <i>Other</i>	27.9%
TOURISM AND OTHER RELATED ECONOMIC STATISTICS			
Total Expenditure (<i>US\$ millions</i>)	\$304.0	Tourism Budget (<i>US\$ thousands</i>) ^{1b}	\$2,316
ACCOMMODATION STATISTICS		SOCIO-ECONOMIC STATISTICS	
Rooms	1,949	Land Area (<i>square kilometers</i>)	417
Room Occupancy Rate ¹	70.0%	Population (<i>thousand mid year 2003</i>)	26.0

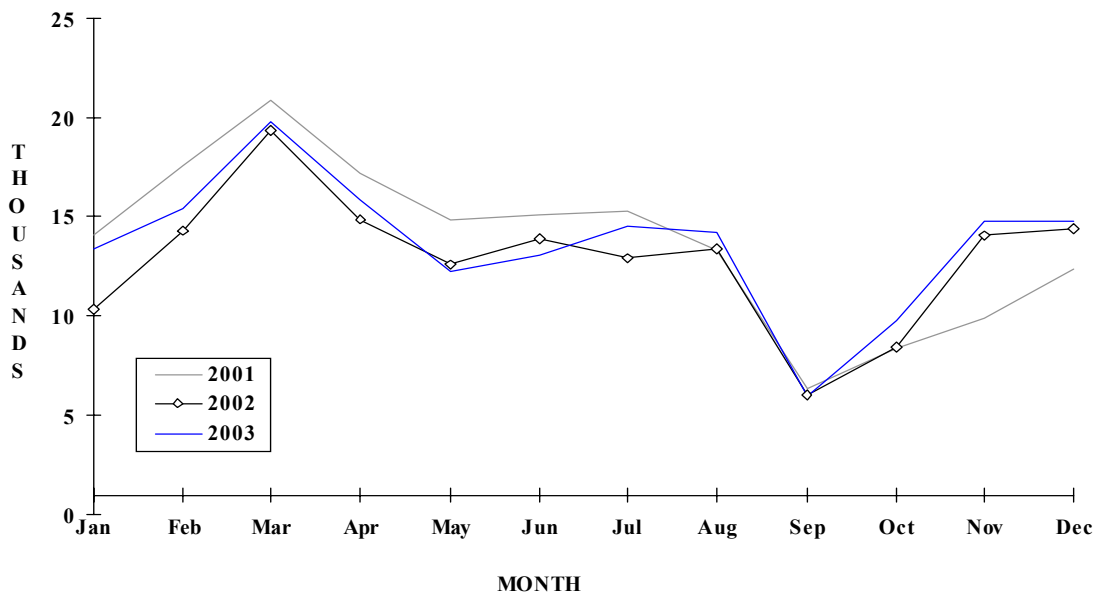
* Based on visitor arrivals

TURKS & CAICOS ISLANDS

TOURIST ARRIVALS BY MAIN MARKETS 2004



MONTHLY TOURIST ARRIVALS



TURKS AND CAICOS ISLANDS

TOURIST ARRIVALS

Country	2000	2001	2002	2003	% Share	
					2004	2004
United States	111827	125125	119281	128990	118156	78.5
Canada	15515	15282	14704	14689	16048	10.7
United Kingdom	4737	6507	6611	7266		0.0
Other Europe	6952	4579	3714	5444	10828	7.2
Rest of World	12341	13662	9956	9354	5547	3.7
TOTAL	151372	165155	154266	165743	150579	100.0

MONTHLY TOURIST ARRIVALS

Month	2000	2001	2002	2003	% Change	
					* 2004	2004/03
January	12500	14077	10269	13394	15000	-
February	14711	17552	14281	15452	16494	-
March	15754	20888	19339	19843	18250	-
April	16357	17239	14831	15861	17469	-
May	12515	14817	12569	12568	15003	-
June	11731	15068	13890	13042	13861	-
July	11872	15244	12882	14497	13861	-
August	12057	13294	13429	14171	18940	-
September	8303	6356	5967	5950	4552	-
October	9227	8393	8406	9767	13157	-
November	11256	9883	14052	14808	13014	-
December	15089	12344	14351	14747	13246	-
TOTAL	151372	165155	154266	164100	172847	-

* Visitor Arrivals

TOURIST ACCOMMODATION (Rooms)

Rooms	2000	2001	2002	2003	2004
Hotels	436	n.a	n.a	n.a	1877
Apartments	1037	n.a	n.a	n.a	3
Villas/Cottages	71	n.a	n.a	n.a	53
Guest Houses/Other	479	n.a	n.a	n.a	16
Total	2023	2134	2155	2155	1949

Source: Tourist Board, Turks and Caicos Islands

US VIRGIN ISLANDS

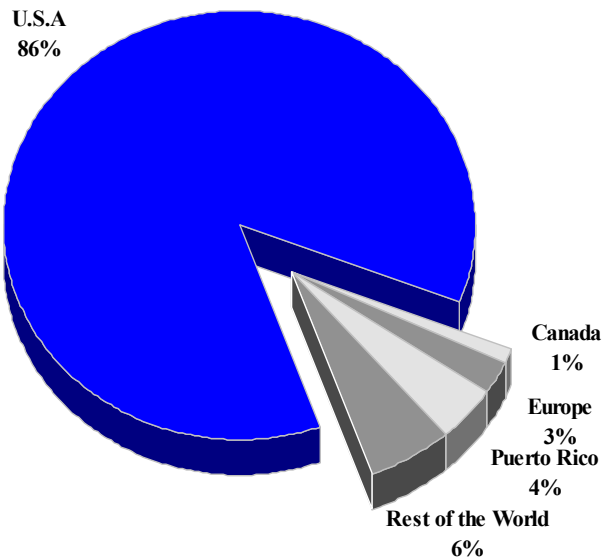
TOURISM HIGHLIGHTS FOR 2006

VISITOR ARRIVALS			
Tourist Arrivals ✈	671,362	Cruise Passengers	1,903,533
➔ <i>Summer</i>	60.0%	➔ <i>Summer</i>	58.2%
➔ <i>Winter</i>	40.0%	➔ <i>Winter</i>	41.8%
Same Day Visitors ¹¹	111,400	Cruise Calls	n.a
TOURISM AND OTHER RELATED ECONOMIC STATISTICS			
Total Expenditure (<i>US\$ millions</i>)	\$1,365.9	Consumer Price Index (<i>% ch. 2004/'03</i>)	2.6%
Cruise Expenditure (<i>US\$ millions</i>)	\$538.6		
ACCOMMODATION STATISTICS			
Total Hotel Rooms	4,983	St. Thomas/St. John - Hotel Rooms	3,811
Room Occupancy Rate	61.3%	Occupancy Rate	65.2%
ACCOMMODATION STATISTICS (<i>continued</i>)		SOCIO - ECONOMIC STATISTICS	
St. Croix - Hotel Rooms	1,172	Land Area (<i>square kilometers</i>)	342
Occupancy Rate	49.2%	Population (<i>thousand mid year 2004</i>)	111.5

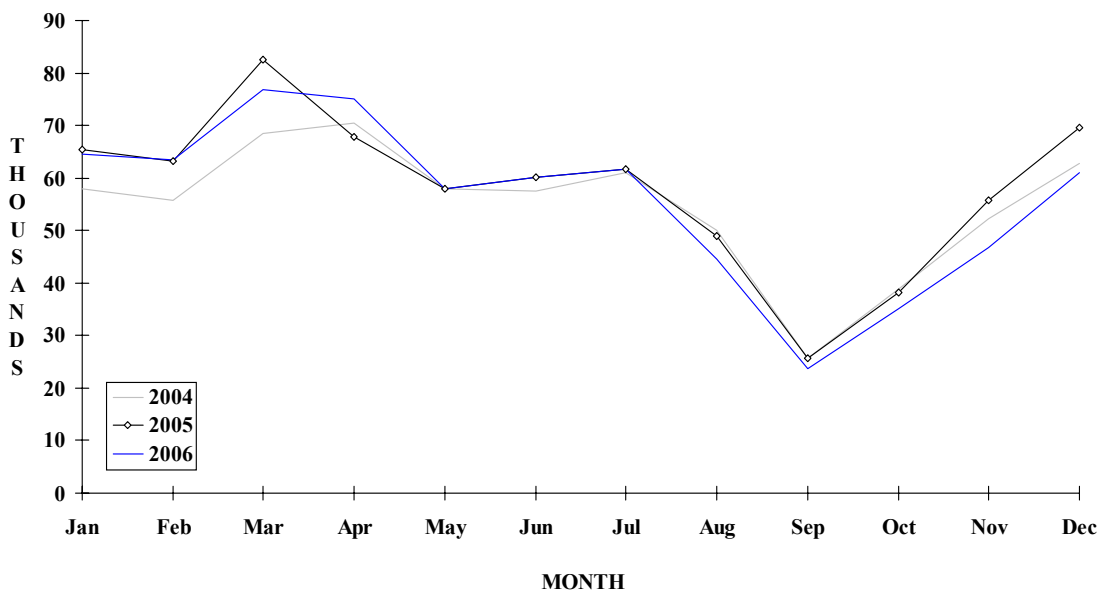
US VIRGIN ISLANDS

HOTEL REGISTRATIONS BY MAIN MARKET

2004



MONTHLY TOURIST ARRIVALS



VISITOR AIR ARRIVALS BY CATEGORY

Category	2002	2003	2004	2005	2006
Tourists	520200	537900	543600		
Same-day visitors*	77700	82900	111400		
TOTAL	597900	620800	655000	0	0

St Thomas\St John 472900 505900 526400

* Excluding Cruise Passengers

NON-RESIDENT HOTEL REGISTRATIONS**

Country of Residence	2002	2003	2004	2005	2006	% Share 2006
United States	471738	496168	526587			??
Canada	4372	4822	5259			??
Europe	6144	7749	15813			??
Puerto Rico	21859	23792	24662			??
Other Caribbean	5034	4996	6771			??
Latin America	1322	1491	2548			??
Rest of World	85216	84377	26484			??
TOTAL	595685	623395	608124	0	0	??

** Totals vary according to the number of hotels responding to the survey; the reader should be wary of year-to-year comparisons.

VISITOR AIR ARRIVALS BY MONTH***

Month	2002	2003	2004	2005	2006	% Change 2006/05
January	55024	56241	57924	65375	64971	-0.6
February	54974	55399	55754	63212	63469	0.4
March	71470	69197	68590	82601	76808	-7.0
April	58839	54704	70415	67910	74989	10.4
May	48433	52459	58041	57883	57929	0.1
June	50318	48578	57612	60209	60087	-0.2
July	49543	53668	60956	61732	61643	-0.1
August	46161	49954	50059	48975	44628	-8.9
September	23435	25350	25631	25653	23779	-7.3
October	31684	36344	38808	38159	35204	-7.7
November	47169	55518	52166	55760	46769	-16.1
December	60863	63402	62682	69564	61086	-12.2
TOTAL	597913	620814	658638	697033	671362	-3.7

*** Excluding resident arrivals and inter-island traffic but including excursionists

US VIRGIN ISLANDS

CRUISE PASSENGER ARRIVALS

Month						% Change	
	2002	2003	2004	2005	2006	2006/05	
January	237767	203182	223648	226134	200681	-11.3	
February	198263	181901	205257	206968	187511	-9.4	
March	219810	193414	230497	244794	208264	-14.9	
April	161235	182605	185792	217549	198878	-8.6	
May	103064	106055	118496	117759	124800	6.0	
June	88152	92844	126643	99201	101846	2.7	
July	101672	103017	123695	94655	118570	25.3	
August	98079	96733	109498	102297	126044	23.2	
September	74788	87661	72764	73236	107313	46.5	
October	110793	116450	129480	142483	124427	-12.7	
November	145473	191191	199627	185387	185717	0.2	
December	199607	218695	239292	202085	219482	8.6	
TOTAL	1738703	1773748	1964689	1912548	1903533	-0.5	
Number of Calls	845	888	925	n.a	n.a		

TOURIST ACCOMMODATION

Type of Accommodation	2002	2003	2004	2005	2006
Hotel (rooms)	3991	3985	3930		
Condo/Villa Units	1101	1059	1053		
TOTAL	5092	5044	4983	0	0
St Thomas/St. John	3940	3864	3811		
St Croix	1197	1180	1172		

Source: Bureau of Economic Analysis, USVI Department of Commerce

VENEZUELA

TOURISM HIGHLIGHTS FOR 2004

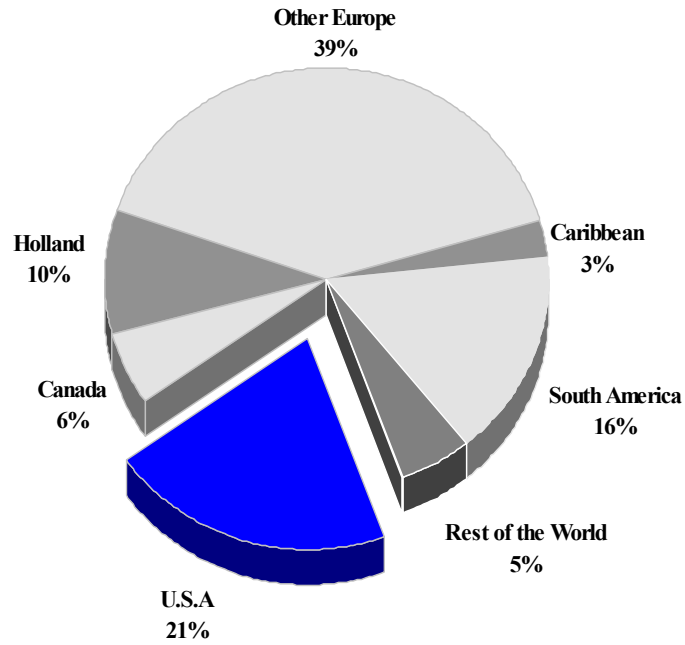
VISITOR ARRIVALS			
Tourist Arrivals ¹ ✈	491,754	Tourist Air Arrivals to Maiquetía (Caracas)	n.a
➡ <i>Summer</i>	70.0%	Tourists Air Arrivals to Porlamar	n.a
➡ <i>Winter</i>	30.0%		
Cruise Passenger Arrivals	131,768		
VISITOR PROFILE			
Tourist Arrivals by Purpose of Visit		Main Source of Information**	
➡ <i>Holiday</i>	57.0%	➡ <i>Television</i>	5.02%
➡ <i>Business</i>	37.3%	➡ <i>Family and Friends</i>	43.31%
➡ <i>Other</i>	5.7%	➡ <i>Newspapers</i>	3.01%
		➡ <i>Other</i>	48.66%
TOURISM AND OTHER RELATED ECONOMIC STATISTICS			
Total Expenditure (US\$ millions)	\$426.2	Average Daily Expenditure (US\$)	\$54.80
Average visitor expenditure (US\$)	\$866.60	GDP at Factor Cost (US\$ millions) ^v	\$102,484
ACCOMMODATION STATISTICS		SOCIO-ECONOMIC STATISTICS	
Rooms	33,290	Land Area (square kilometers)	912,050
		Population (thousand mid year 2003)	25,698.8

**Source: September 1998 Survey of Receptive Tourist at the Simon Bolivar International Airport of Maquetía

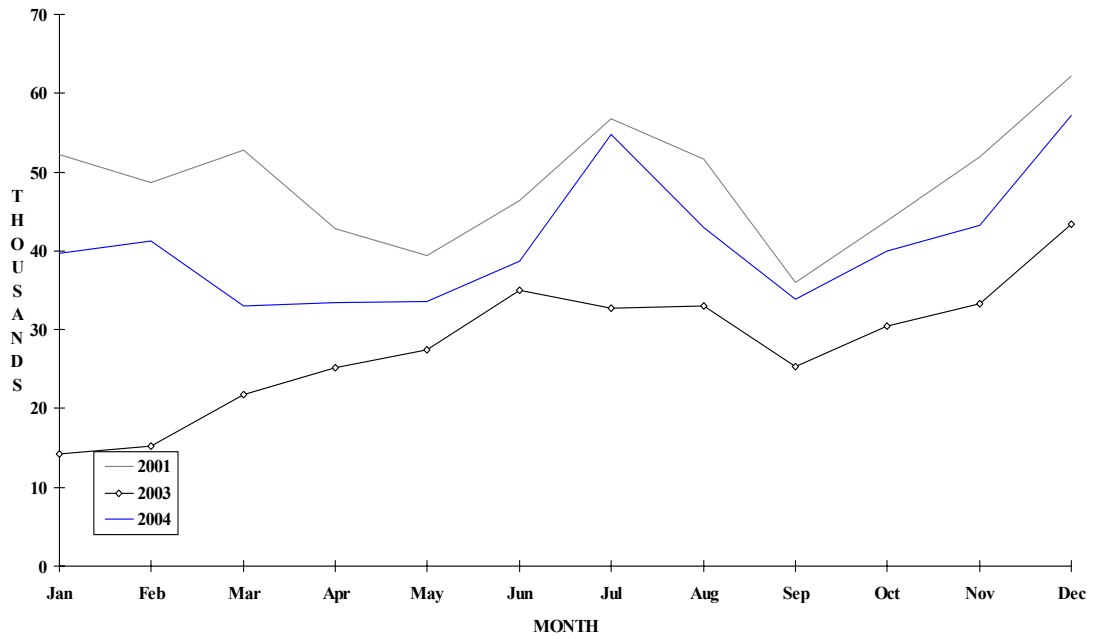
VENEZUELA

TOURIST ARRIVALS BY MAIN MARKETS

2001



MONTHLY TOURIST ARRIVALS



VENEZUELA

TOURISTS AIR ARRIVALS BY INTERNATIONAL AIRPORTS

Area	2000	2001	2002	2003	% Share	
					2004	2004
Maiquetía (Caracas)	320884	n.a	n.a	n.a	n.a	n.a
Porlamar *	101287	n.a	n.a	n.a	n.a	n.a
Maracaibo	n.a	n.a	n.a	n.a	n.a	n.a
Punto Fijo	n.a	n.a	n.a	n.a	n.a	n.a
San Antonio	n.a	n.a	n.a	n.a	n.a	n.a
Barcelona	n.a	n.a	n.a	n.a	n.a	n.a
Barquisimeto	n.a	n.a	n.a	n.a	n.a	n.a
Coro	n.a	n.a	n.a	n.a	n.a	n.a
TOTAL	n.a	n.a	n.a	n.a	n.a	n.a

These cities are major tourism areas in Venezuela.

* "The International Airport of the Caribbean" is located in Porlamar in the state of Nueva Esparta. This state consists of the tourist destinations of Margarita, Coche and Cubagua Islands

TOURISTS ARRIVALS BY MAJOR MARKETS

Country of Residence	2000	2001	2002	2003	% Share	
					2004	2004
United States	74124	121135	n.a	n.a	n.a	-
Canada	38045	32982	n.a	n.a	n.a	-
Argentina	9538	27396	n.a	n.a	n.a	-
Columbia	8902	20029	n.a	n.a	n.a	-
Other South America	18505	44324	n.a	n.a	n.a	-
Central America	2628	4656	n.a	n.a	n.a	-
Holland	71310	56341	n.a	n.a	n.a	-
Italy	19681	37421	n.a	n.a	n.a	-
Spain	14803	20060	n.a	n.a	n.a	-
Other Europe	182243	177092	n.a	n.a	n.a	-
Caribbean	12760	15849	n.a	n.a	n.a	-
Rest of World	16508	27114	n.a	n.a	n.a	-
TOTAL	469047	584399	n.a	336974	491754	-

VENEZUELA

TOURISTS ARRIVALS BY MONTH

Month	2000	2001	2002	2003	% Change	
					2004	2004/03
January	38318	52171	n.a	14190	39728	180.0
February	40697	48693	n.a	15188	41307	172.0
March	40838	52733	n.a	21823	33071	51.5
April	37272	42830	n.a	25166	33452	32.9
May	32606	39373	n.a	27409	33532	22.3
June	33726	46344	n.a	35004	38655	10.4
July	45506	56735	n.a	32684	54810	67.7
August	39172	51602	n.a	33057	42907	29.8
September	31159	36018	n.a	25305	33871	33.9
October	37433	43797	n.a	30501	39971	31.0
November	43291	51995	n.a	33293	43192	29.7
December	49029	62108	n.a	43354	57258	32.1
TOTAL	469047	584399	0	336974	491754	45.9

CRUISE PASSENGER ARRIVALS

Month	2000	2001	2002	2003	% Change	
					2004	2004/03
January	15833	n.a	n.a	12449	26514	113.0
February	18885	n.a	n.a	14195	19869	40.0
March	35679	n.a	n.a	16942	19043	12.4
April	25885	n.a	n.a	12668	0	-
May	2504	n.a	n.a	0	5544	-
June	0	n.a	n.a	0	5542	-
July	0	n.a	n.a	0	2839	-
August	0	n.a	n.a	0	5672	-
September	0	n.a	n.a	0	11039	-
October	4076	n.a	n.a	5196	5617	8.1
November	11142	n.a	n.a	14016	11988	-14.5
December	20827	n.a	n.a	22981	18101	-21.2
TOTAL	134831	n.a	n.a	98447	131768	33.8

ESTIMATED VISITOR EXPENDITURE (US dollars per tourist)

Expenditure	1997	1998	1999	2000	2001
Total	1086	1233	1158.7	1197.2	n.a

TOURISTS ACCOMMODATION BY STATES

Area	2000	2001	2002	2003	2004	% Share 2004
Caracas Metropolitan Area	8086	8535	8535	8535	5934	17.8
Anzoátegui ¹	4252	4252	4252	4252	4252	12.8
Bolívar ²	1572	1630	1630	1630	1630	4.9
Carabobo ³	1475	1599	1599	1599	1478	4.4
Falcón ⁴	1062	1292	1292	1292	1292	3.9
Nueva Esparta ⁵	4309	4309	4309	4309	3834	11.5
Mérida ⁶	1695	1695	1695	1695	1704	5.1
Other States	10698	10698	10950	10950	13166	39.5
Total	33149	34010	34262	34262	33290	100.0

¹ The State of Anzoátegui consists of the tourist destination of Barcelona - Puerto La Cruz

² The State of Bolívar consists of the tourist destination of Canaima National Park and La Gran Sabana

³ The State of Carabobo consists of the tourist destination, Valencia and Puerto Cabello

⁴ The State of Falcón consists of the tourist destinations of Coro, Punto Fijo and the Morrocoy National Park

⁵ The State of Nueva Esparta consists of the tourist destinations of Margarita, Coche and Cubagua Islands

⁶ The State of Mérida consists of the tourist destinations of Mérida City and the Sierra Navada National Park