

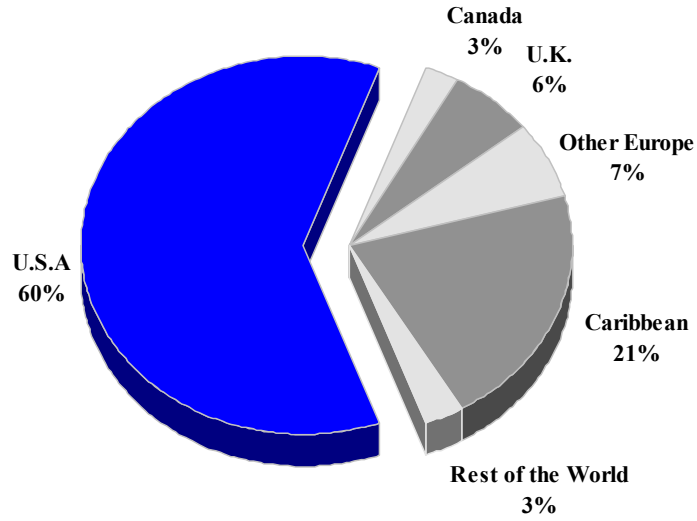
## ANGUILLA

### TOURISM HIGHLIGHTS FOR 2006

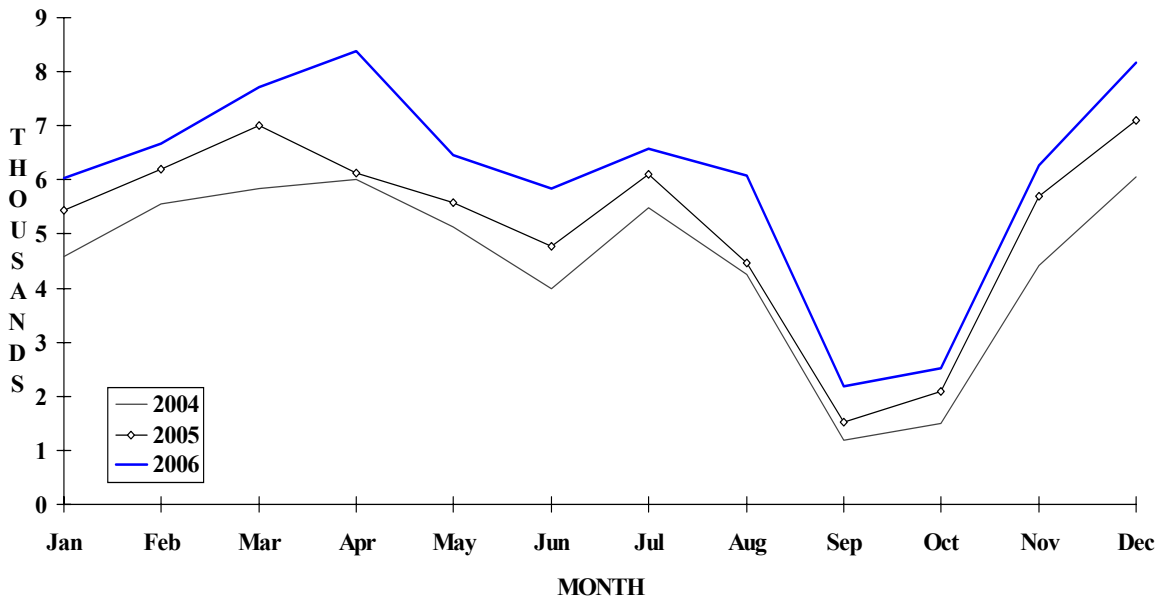
VISITOR ARRIVALS			
Tourist Arrivals ✈ ➡ <i>Winter</i> ➡ <i>Summer</i>	72,962 39.9% 60.1%	Same Day Visitors	94,283
VISITOR PROFILE			
Average Length of Stay ( <i>nights</i> ) <sup>1</sup>	8.0	<b>Tourist Arrivals by Purpose of Visit</b> ➡ <i>Holiday</i> ➡ <i>Business</i>	92.2% 7.8%
TOURISM AND OTHER RELATED ECONOMIC STATISTICS			
Average Daily Expenditure ( <i>US\$</i> ) <sup>V</sup> ➡ <i>Winter</i> ➡ <i>Summer</i>	\$213.81 \$154.49	Visitor Expenditure ( <i>US\$ millions</i> ) GDP at Factor Cost ( <i>US\$ millions</i> ) Consumer Price Index (% <i>ch. 2004/'03</i> )	\$69.4 \$108.9 5.1%
Tourism Budgets ( <i>US\$ thousands</i> ) <sup>V</sup>	\$819	Hotel and Restaurant contribution to GDP	28.5%
ACCOMMODATION STATISTICS		SOCIO-ECONOMIC STATISTICS	
Rooms Occupancy rate <sup>1</sup>	756 41.9%	Land Area ( <i>square Kilometres</i> ) Population ( <i>thousand, mid year 2004</i> )	91 12.5

# ANGUILLA

**TOURIST ARRIVALS BY MAIN MARKETS  
2006**



**MONTHLY TOURIST ARRIVALS**



ANGUILLA

VISITOR ARRIVALS BY CATEGORY

Category	2002	2003	2004	2005	%Share	
					2006	2006
Tourists	43969	46915	53987	62084	72962	43.6
Same-day visitors	67149	62367	66801	81102	94283	56.4
<b>TOTAL</b>	<b>111118</b>	<b>109282</b>	<b>120788</b>	<b>143186</b>	<b>167245</b>	<b>100.0</b>
By Sea	81464	80951	96835	111169	133794	80.0
By Air	29654	28331	23953	32017	33451	20.0

TOURIST ARRIVALS BY COUNTRY OF RESIDENCE

Country of Residence	2002	2003	2004	2005	%Share	
					2006	2006
U.S.A.	28755	30644	35751	41733	44489	61.0
Canada	1301	1289	1549	1792	1977	2.7
United Kingdom	2529	2962	3198	3834	4344	6.0
Other Europe	2854	3346	4469	4279	4874	6.7
Caribbean	7455	7362	7499	8529	15280	20.9
Other	1075	1312	1521	1917	1998	2.7
<b>TOTAL</b>	<b>43969</b>	<b>46915</b>	<b>53987</b>	<b>62084</b>	<b>72962</b>	<b>100.0</b>

**ANGUILLA**

**MONTHLY TOURIST ARRIVALS\***

Months	2002	2003	2004	2005	% Change	
					2006	2006\05
January	3868	4018	4580	5430	6042	11.3
February	4677	4501	5563	6208	6681	7.6
March	5702	4930	5846	6997	7718	10.3
April	4472	4787	6005	6117	8392	37.2
May	3783	3915	5130	5588	6466	15.7
June	2997	3373	4001	4766	5845	22.6
July	3771	4542	5485	6093	6588	8.1
August	3536	3856	4246	4460	6086	36.5
September	787	967	1178	1525	2196	44.0
October	1619	1712	1494	2093	2513	20.1
November	3786	4541	4410	5708	6268	9.8
December	4971	5773	6049	7099	8167	15.0
<b>TOTAL</b>	<b>43969</b>	<b>46915</b>	<b>53987</b>	<b>62084</b>	<b>72962</b>	<b>17.5</b>

*\*Excluding visiting Anguillan nationals who reside abroad*

**TOURIST ACCOMMODATION (Rooms)**

Type of Accommodation	2002	2003	2004	2005	% Share	
					2006	2006
Hotels <sup>1</sup>	536	362	346	337		??
Guest Houses	101	88	88	96		??
Apartments/Villas	400	309	322	313		??
<b>TOTAL</b>	<b>1037</b>	<b>759</b>	<b>756</b>	<b>746</b>	<b>0</b>	<b>??</b>

<sup>1</sup> *Sonesta Hotel closed in September 2002*

**Source: Department of Tourism, Anguilla**

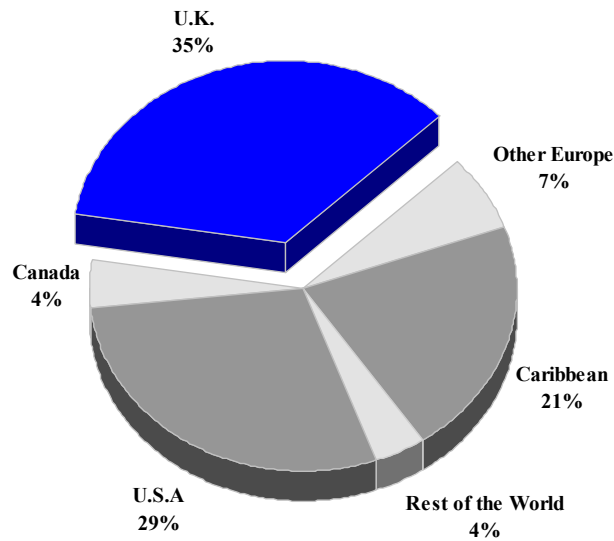
## ANTIGUA AND BARBUDA

### TOURISM HIGHLIGHTS FOR 2006

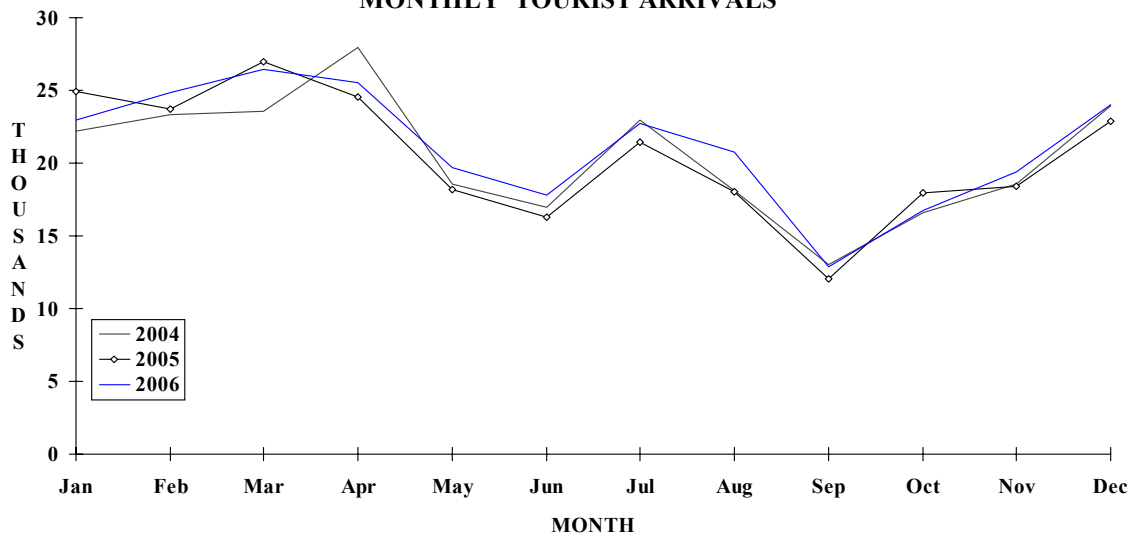
VISITOR ARRIVALS			
Tourist Air Arrivals (Non-nationals) ➔	253,669	Cruise Passenger Arrivals	471,623
➔ <i>Winter</i>	40.8%	➔ <i>Winter</i>	57.3%
➔ <i>Summer</i>	59.2%	➔ <i>Summer</i>	42.7%
Tourist Air Arrivals (Nationals)	n.a	Cruise Ship Calls	240
VISITOR PROFILE			
Tourist Arrivals by Purpose of Visit	88.6%	Age Distribution of Visitors <sup>IV</sup>	
➔ <i>Holiday</i>	4.9%	➔ 15 and Under	8.2%
➔ <i>Business</i>	6.5%	➔ 15-44	56.6%
➔ <i>Other</i>		➔ 45-59	26.9%
		➔ 60+	8.3%
TOURISM AND OTHER RELATED ECONOMIC STATISTICS			
Total Expenditure ( <i>US\$ million</i> )	\$337.3	Hotel and Restaurant contribution to GDP	10.1%
GDP at Factor Cost ( <i>US \$million</i> )	\$681.7	Consumer Price Index ( <i>% ch. 2004/'03</i> )	1.7%
ACCOMMODATION STATISTICS		SOCIO-ECONOMIC STATISTICS	
Rooms	3,276	Land Area ( <i>square Kilometres</i> )	440
		Population ( <i>thousand mid year 2004</i> )	80.1

# ANTIGUA & BARBUDA

**TOURIST ARRIVALS BY MAIN MARKETS  
2006**



**MONTHLY TOURIST ARRIVALS**



## TOURIST ARRIVALS BY COUNTRY OF RESIDENCE\*

Country of Residence	2002	2003	2004	2005	2006	% Share 2006
U.S.A.	60680	64363	70534	68527	73497	29.0
Canada	10184	8603	9452	9855	10053	4.0
United Kingdom	72401	83447	98101	92518	89563	35.3
Other Europe	9406	15218	15416	15750	16975	6.7
Caribbean	38721	47588	48933	49011	53988	21.3
Rest of World	6693	4813	3361	9723	9593	3.8
<b>TOTAL</b>	<b>198085</b>	<b>224032</b>	<b>245797</b>	<b>245384</b>	<b>253669</b>	<b>100.0</b>

\* Non-national Air Arrivals only

The statistics above exclude yacht and other tourist arrivals by sea, as well as visits by nationals of Antigua and Barbuda who permanently reside abroad. Further details are provided below

OTHER VISITORS	2002	2003	2004	2005	2006
Yacht	n.a	n.a	n.a		
Other Sea Arrivals	n.a	n.a	n.a		
Nationals Resident Abroad	6579	n.a	n.a		

## MONTHLY TOURIST ARRIVALS\*

Months	2002	2003	2004	2005	2006	%Change 2006/05
January	17664	19609	22222	24918	22932	-8.0
February	18163	18988	23322	23738	24815	4.5
March	21064	19516	23596	26979	26410	-2.1
April	17972	20485	27970	24562	25523	3.9
May	15665	19378	18557	18218	19698	8.1
June	13411	16711	16970	16276	17779	9.2
July	16997	20106	22971	21421	22764	6.3
August	15696	19932	18124	18049	20757	15.0
September	11063	11746	13023	12014	12893	7.3
October	13999	15954	16568	17936	16744	-6.6
November	17771	18357	18551	18389	19368	5.3
December	18620	23250	23923	22884	23986	4.8
<b>TOTAL</b>	<b>198085</b>	<b>224032</b>	<b>245797</b>	<b>245384</b>	<b>253669</b>	<b>3.4</b>

\* Non-national Air Arrivals only

ANTIGUA AND BARBUDA

CRUISE PASSENGER ARRIVALS\*

Months	2002	2003	2004	2005	% Change	
					2006	2006/05
January	57953	56195	71669	74925	69956	-6.6
February	43799	42841	62424	64365	64636	0.4
March	53406	44298	68789	67078	64783	-3.4
April	35496	45217	68776	61266	61851	1.0
May	9981	8259	13787	9353	10092	7.9
June	6628	9175	14542	7219	7373	2.1
July	7507	9802	16648	10244	7456	-27.2
August	6764	9533	18680	10542	7454	-29.3
September	6229	10210	22872	6807	10968	61.1
October	10202	25515	21855	13550	18365	35.5
November	25431	55116	63078	52934	66906	26.4
December	46255	69525	79633	88568	81783	-7.7
<b>TOTAL</b>	<b>309651</b>	<b>385686</b>	<b>522753</b>	<b>466851</b>	<b>471623</b>	<b>1.0</b>

Cruise Ship Calls\*\* 217 297 375 321 240

\*Excludes Windjammer Cruises which brought 11,756 passengers in 1999, 7,891 in 2000.

\*\* At the Deep Water Harbour , Nelson Dockyard and Heritage Quay.

TOURIST ACCOMMODATION (Rooms)

Type of Accommodation	2002	2003	2004	2005	2006
Hotels	n.a	n.a	2855		
Apartments/Villa	n.a	n.a	388		
Guest Houses	n.a	n.a	33		
<b>TOTAL</b>	<b>n.a</b>	<b>n.a</b>	<b>3276</b>	<b>0</b>	<b>0</b>

Source: Antigua Department of Tourism



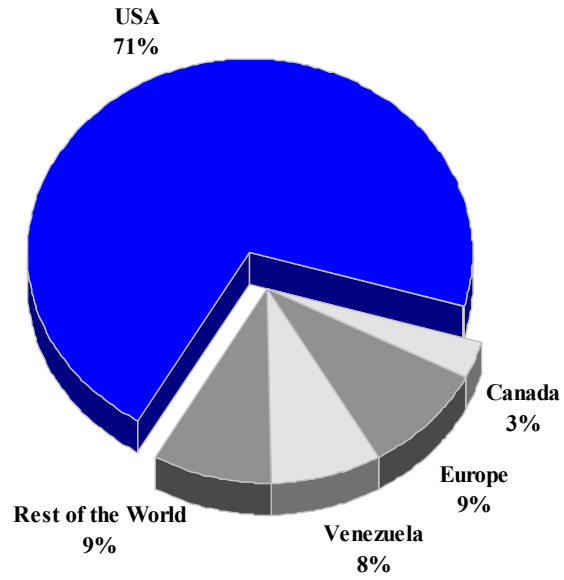
## ARUBA

### TOURISM HIGHLIGHTS FOR 2006

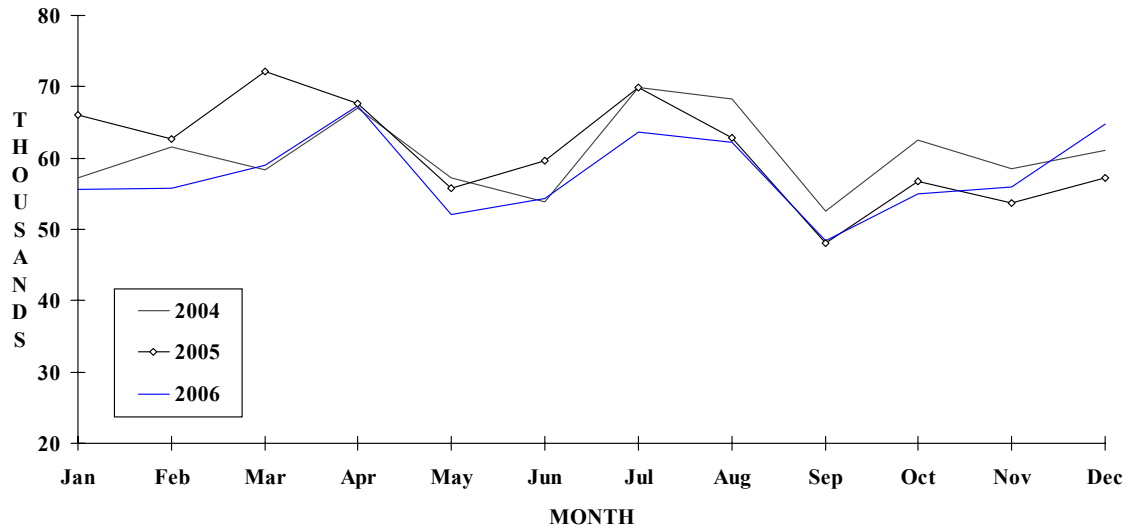
VISITOR ARRIVALS			
Tourist Arrivals ➔	694,372	Cruise Passenger Arrivals	591,474
➔ <i>Winter</i>	33.5%	➔ <i>Winter</i>	46.4%
➔ <i>Summer</i>	66.5%	➔ <i>Summer</i>	53.6%
		Cruise Ship Calls	314
VISITOR PROFILE			
Average Length of Stay (nights)	7.9	<b>Tourist Arrivals by Place of Stay</b>	
<b>Tourist Arrivals by Purpose of Visit</b>		➔ Hotels	87.9%
➔ <i>Holiday</i>	86.0%	➔ Guest Houses/Apartments	1.0%
➔ <i>Business</i>	3.8%	➔ Private	11.1%
➔ <i>Other</i>	10.2%		
TOURISM AND OTHER RELATED ECONOMIC STATISTICS			
Total Expenditure ( <i>US\$ millions</i> )	\$812.4	Tourism Budget ( <i>US\$ thousands</i> )	\$23,595
Receipts per visitor night ( <i>US\$</i> ) <sup>ii</sup>	\$186.59	Consumer Price Index (% ch. 2004/'03)	2.5%
ACCOMMODATION STATISTICS		SOCIO-ECONOMIC STATISTICS	
Rooms	6,886	Land Area ( <i>square Kilometres</i> )	180
Room Occupancy Rate	80.7%	Population ( <i>thousand mid year 2004</i> )	97.5

# ARUBA

**TOURIST ARRIVALS BY MAIN MARKETS  
2006**



**MONTHLY TOURIST ARRIVALS**



## TOURIST ARRIVALS BY COUNTRY OF RESIDENCE

Country of Residence	2002	2003	2004	2005	2006	% Share 2006
U.S.A.	432906	460241	531287	532352	493285	71.0
Canada	17601	17218	20560	21350	22590	3.3
Holland	27992	36415	38122	38667	37130	5.3
Other Europe	15978	18296	22306	24514	24863	3.6
Venezuela	81665	54554	59218	59928	57105	8.2
Brazil	2314	2785	4762	6067	6667	1.0
Other South America	31419	17456	18391	17808	20855	3.0
Neth. Antilles	19602	20962	21472	19071	19924	2.9
Other Caribbean	8784	10526	9799	8848	8461	1.2
Rest of World	4366	3453	2240	3909	3492	0.5
<b>TOTAL</b>	<b>642627</b>	<b>641906</b>	<b>728157</b>	<b>732514</b>	<b>694372</b>	<b>100.0</b>

## MONTHLY TOURIST ARRIVALS

Months	2002	2003	2004	2005	2006	% Change 2006/05
January	52101	50017	57266	66040	55590	-15.8
February	52643	51940	61560	62640	55716	-11.1
March	63683	53389	58272	72188	59032	-18.2
April	56252	55609	67035	67611	67406	-0.3
May	46178	45199	57201	55805	52050	-6.7
June	51139	49479	53908	59632	54390	-8.8
July	56246	60208	69930	69959	63602	-9.1
August	63665	65270	68262	62914	62324	-0.9
September	45828	45480	52611	48047	48470	0.9
October	48285	54826	62487	56805	55048	-3.1
November	52335	56089	58570	53663	56011	4.4
December	54272	54400	61055	57210	64733	13.2
<b>TOTAL</b>	<b>642627</b>	<b>641906</b>	<b>728157</b>	<b>732514</b>	<b>694372</b>	<b>-5.2</b>

## CRUISE PASSENGER ARRIVALS

Months	2002	2003	2004	2005	2006	% Change 2006/05
January	77102	69298	66504	65707	69393	5.6
February	67877	61276	54086	59593	64878	8.9
March	70602	70826	64571	65359	75179	15.0
April	73027	56758	56940	65930	57402	-12.9
May	30695	25615	28250	25642	31445	22.6
June	22150	19815	28046	20662	22817	10.4
July	25234	23379	28809	20778	17034	-18.0
August	25737	23259	28220	19857	24136	21.5
September	16654	23240	24181	15610	22741	45.7
October	36473	46172	56482	34533	46486	34.6
November	66988	50411	62634	77094	75677	-1.8
December	69656	72278	77597	82054	84016	2.4
<b>TOTAL</b>	<b>582195</b>	<b>542327</b>	<b>576320</b>	<b>552819</b>	<b>591204</b>	<b>6.9</b>
Cruise Ship Calls	337	315	318	311	314	

## TOURIST ACCOMMODATION (Rooms)

Type of Accommodation	2002	2003	2004	2005	2006
Hotels, Apartments	n.a	n.a	n.a	n.a	
Condo	n.a	n.a	n.a	n.a	
Other	n.a	n.a	n.a	n.a	
<b>TOTAL</b>	<b>7500</b>	<b>7500</b>	<b>6886</b>	<b>7966</b>	

\* Based on data from the Aruba Hotel and Tourism Association (AHATA)

Source: Aruba Tourism Authority

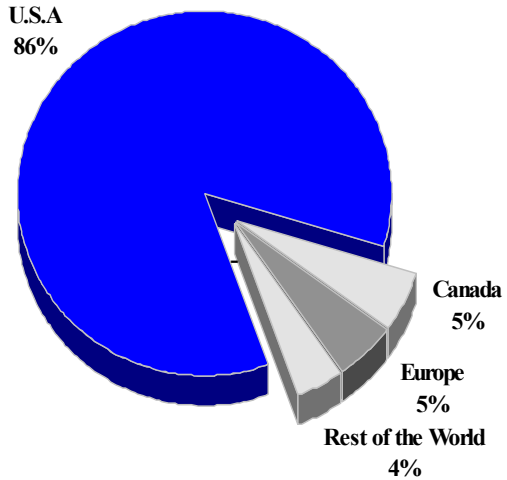
## THE BAHAMAS

### TOURISM HIGHLIGHTS FOR 2006

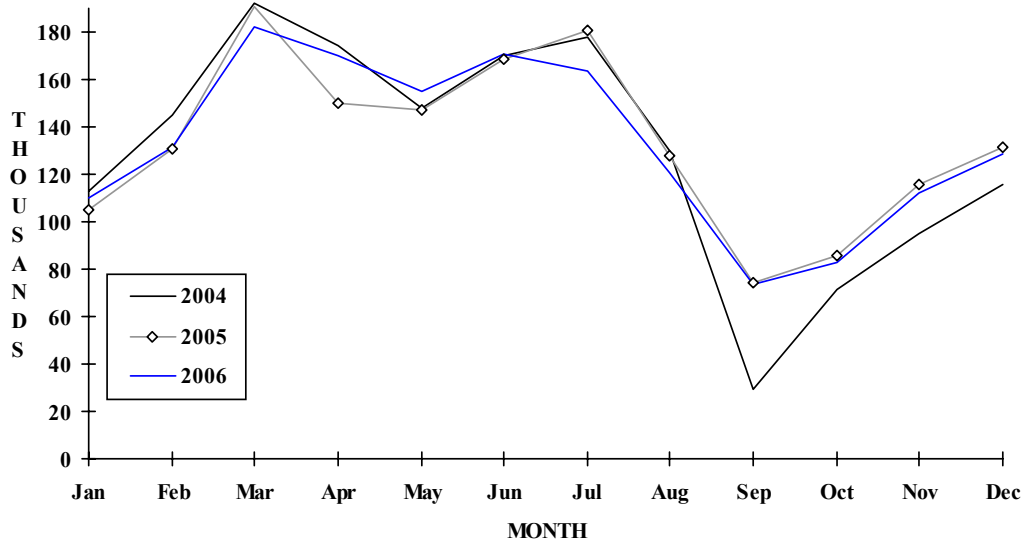
VISITOR ARRIVALS			
Tourist Arrivals ➔	1,600,112	Cruise Passenger Arrivals	3,076,397
➔ <i>Winter</i>	37.1%	➔ <i>Winter</i>	37.7%
➔ <i>Summer</i>	62.9%	➔ <i>Summer</i>	62.3%
Same Day Visitors	n.a	Cruise Ship Calls	
VISITOR PROFILE			
Average Length of Stay ( <i>nights</i> )		<b>Tourist Arrivals by Place of Stay</b>	
<b>Tourist Arrivals by Purpose of Visit</b>		➔ <i>Hotels</i>	73.8%
➔ <i>Holiday</i>	89.1%	➔ <i>Guest Houses/Apartments</i>	11.3%
➔ <i>Business</i>	9.5%	➔ <i>Private</i>	4.6%
➔ <i>Other</i>	1.4%	➔ <i>Other</i>	10.3%
TOURISM AND OTHER RELATED ECONOMIC STATISTICS			
Total Expenditure ( <i>US\$ millions</i> )	\$1,884.5	GDP at Market Prices ( <i>US\$ million</i> ) <sup>1</sup>	\$5,260.0
Cruise Expenditure ( <i>US\$ millions</i> )	\$185.8	Consumer Price Index (% <i>ch.</i> 2004/'03)	1.7%
Tourism Budget ( <i>US\$ thousands</i> )	\$67,150		
ACCOMMODATION STATISTICS		SOCIO-ECONOMIC STATISTICS	
Rooms	15,508	Land Area ( <i>square Kilometres</i> )	13,864
Room Occupancy Rates	65.1%	Population ( <i>thousand mid year 2004</i> )	320.7

# THE BAHAMAS

**TOURIST ARRIVALS BY MAIN MARKETS  
2006**



**MONTHLY TOURIST ARRIVALS**



## VISITOR ARRIVALS BY CATEGORY

Category	2002	2003	2004	2005	2006
Tourists	1513151	1510169	1561312	1608153	1600112
Cruise Passenger	2802112	2970174	3360012	3335110	3076397
Day Visitors	n.a	83921	86291	n.a	n.a
<b>TOTAL</b>	<b>n.a</b>	<b>n.a</b>	<b>5007615</b>	<b>4943263</b>	<b>4676509</b>

## TOURIST ARRIVALS BY COUNTRY OF RESIDENCE

Country of Residence	2002	2003	2004	2005	2006	% Share 2006
United States	1310140	1305335	1360912	1380083	1364468	85.3
Canada	68592	63148	68462	75643	84626	5.3
Europe	79564	93170	83590	85277	82157	5.1
Rest of the World	54855	48516	48348	67150	68861	4.3
<b>TOTAL</b>	<b>1513151</b>	<b>1510169</b>	<b>1561312</b>	<b>1608153</b>	<b>1600112</b>	<b>100.0</b>

## MONTHLY TOURIST ARRIVALS

Months	2002	2003	2004	2005	2006	% Change 2006/05
January	97425	102975	112604	105119	109739	4.4
February	125600	125034	144852	130608	131770	0.9
March	175662	165072	192455	190708	182244	-4.4
April	138170	147212	174192	149710	169800	13.4
May	143818	135289	147997	147237	155035	5.3
June	155851	152797	170018	168408	170748	1.4
July	161545	160088	177872	180397	163310	-9.5
August	144006	137445	129714	128197	120577	-5.9
September	69559	64981	28933	74555	73839	-1.0
October	86289	89782	71710	86025	82674	-3.9
November	103521	104574	95060	115842	111937	-3.4
December	111705	124920	115905	131347	128439	-2.2
<b>TOTAL</b>	<b>1513151</b>	<b>1510169</b>	<b>1561312</b>	<b>1608153</b>	<b>1600112</b>	<b>-0.5</b>

**BAHAMAS**

**TOURIST ARRIVALS BY AREA\***

Area	2002	2003	2004	2005	2006
Grand Bahama	401582	376425	374433	316265	298778
Nassau\New Providence	882792	895612	921932	1019017	1018900
Family Islands	228777	238132	264947	272871	282434
<b>TOTAL</b>	<b>1577066</b>	<b>1510169</b>	<b>1561312</b>	<b>1608153</b>	<b>1600112</b>

\* Intended address in The Bahamas

**CRUISE PASSENGER ARRIVALS**

Months	2002	2003	2004	2005	% Change	
					2006	2006/05
January	252011	268920	281142	283378	272325	-3.9
February	250999	253670	280530	262342	256617	-2.2
March	290523	282087	369690	302994	310835	2.6
April	243401	255661	363928	309188	321492	4.0
May	205102	234543	274785	217304	244376	12.5
June	220339	230630	262860	202802	231816	14.3
July	228980	228600	309423	249978	246289	-1.5
August	223663	250431	296654	212752	225041	5.8
September	189425	183581	116977	190995	190834	-0.1
October	197791	216568	246867	237414	209638	-11.7
November	243646	278966	276422	276793	251985	-9.0
December	256232	286517	280734	332769	315149	-5.3
<b>TOTAL</b>	<b>2802112</b>	<b>2970174</b>	<b>3360012</b>	<b>3078709</b>	<b>3076397</b>	<b>-0.1</b>
Grand Bahama	196923	203312	327933	321582	339913	5.7
New Providence	1645904	1687851	1981883	1880696	1660094	-11.7
Family Islands	959285	1079011	1050196	876431	1076390	22.8

**TOURIST ACCOMMODATION (Rooms)\***

Type of Accommodation	2002	2003	2004	2005	2006
Total Rooms	15145	15393	15508	14800	14929

\*Licensed Properties

Source: Bahamas Ministry of Tourism



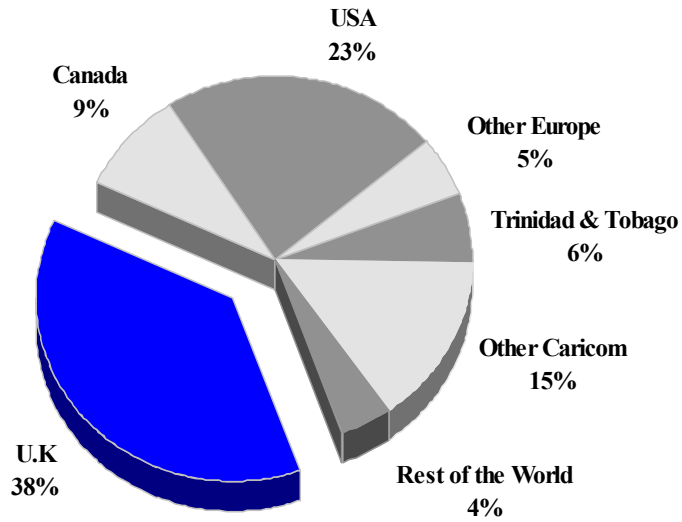
## BARBADOS

### TOURISM HIGHLIGHTS FOR 2006

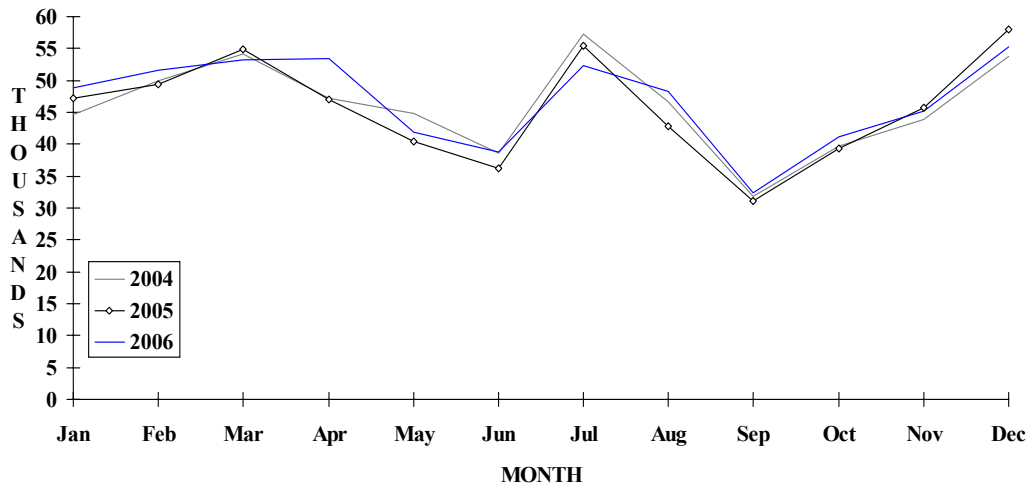
VISITOR ARRIVALS			
Tourist Arrivals ✈	562,558	Cruise Passenger Arrivals	539,092
➡ <i>Winter</i>	36.9%	➡ <i>Winter</i>	44.8%
➡ <i>Summer</i>	63.1%	➡ <i>Summer</i>	55.2%
		Cruise Ship Calls	440
VISITOR PROFILE			
Average Intended Length of Stay ( <i>nights</i> ) <sup>I</sup>	10.0	<b>Tourist Arrivals by Place of Stay<sup>I</sup></b>	
<b>Tourist Arrivals by Purpose of Visit<sup>I</sup></b>		➡ <i>Hotels</i>	49.5%
➡ <i>Holiday</i>	78.5%	➡ <i>Guest House/Apartment</i>	10.7%
➡ <i>Business</i>	12.4%	➡ <i>Private</i>	23.9%
➡ <i>Other</i>	9.1%	➡ <i>Other</i>	0.2%
TOURISM AND OTHER RELATED ECONOMIC STATISTICS			
Total Expenditure ( <i>US\$ millions</i> )	\$763.2	Hotel and Restaurant contribution to GDP	12.4%
Average Daily Expenditure ( <i>US\$</i> )	\$127.48	GDP at Factor Cost ( <i>US\$ million</i> )	\$2,307.7
Tourism Budget ( <i>US\$ thousands</i> ) <sup>IV</sup>	\$22,137	Consumer Price Index ( <i>% ch. 2004/'03</i> )	1.4%
ACCOMMODATION STATISTICS		SOCIO-ECONOMIC STATISTICS	
Rooms	5,945	Land Area ( <i>square Kilometres</i> )	432.0
Room Occupancy Rates	49.7%	Population (thousand mid year 2004)	272.4

# BARBADOS

**TOURIST ARRIVALS BY MAIN MARKETS  
2006**



**MONTHLY TOURIST ARRIVALS**



**BARBADOS**

**TOURIST ARRIVALS BY COUNTRY OF RESIDENCE**

Country of Residence	2002	2003	2004	2005	% Share	
					2006	2006
United States	123429	129326	129675	131005	130767	23.2
Canada	46754	49641	50025	47690	49198	8.7
United Kingdom	192606	202564	213945	202765	211523	37.6
Other Europe	25328	29526	30030	26852	29400	5.2
Trinidad & Tobago	25559	27530	26492	30889	34480	6.1
Other Caricom	64118	69278	78262	97134	82989	14.8
Rest of World	20105	23346	23073	11199	24201	4.3
<b>TOTAL</b>	<b>497899</b>	<b>531211</b>	<b>551502</b>	<b>547534</b>	<b>562558</b>	<b>100.0</b>

**MONTHLY TOURIST ARRIVALS**

Months	2002	2003	2004	2005	% Change	
					2006	2006/05
January	39915	40743	44719	47242	48888	3.5
February	41205	43643	49870	49338	51580	4.5
March	48583	49016	54190	54963	53169	-3.3
April	37804	47504	47255	46979	53484	13.8
May	36373	40750	44865	40368	41849	3.7
June	33426	39994	38536	36289	38708	6.7
July	49239	52982	57285	55385	52315	-5.5
August	47503	46745	45625	42741	48366	13.2
September	30977	28737	31837	31099	32333	4.0
October	39273	38210	39717	39292	41153	4.7
November	44667	45924	43870	45773	45260	-1.1
December	48934	56963	53733	58065	55183	-5.0
<b>TOTAL</b>	<b>497899</b>	<b>531211</b>	<b>551502</b>	<b>547534</b>	<b>562288</b>	<b>2.7</b>

CRUISE PASSENGER ARRIVALS

Months						% Change	
	2002	2003	2004	2005	2006	2006/05	
January	80516	83577	101119	82204	64981	-21.0	
February	64641	66304	83975	64880	57894	-10.8	
March	64057	63071	94446	79841	62211	-22.1	
April	42559	59365	71119	71676	56553	-21.1	
May	28759	20791	26826	21669	22488	3.8	
June	23574	19360	32201	25596	22905	-10.5	
July	24580	22863	27871	19494	19705	1.1	
August	23961	19344	27165	19127	22266	16.4	
September	11099	17716	28525	12975	22571	74.0	
October	29306	37657	40889	28471	32381	13.7	
November	50200	57797	82353	50777	69715	37.3	
December	80001	91274	104781	86878	85422	-1.7	
<b>TOTAL</b>	<b>523253</b>	<b>559119</b>	<b>721270</b>	<b>563588</b>	<b>539092</b>	<b>-4.3</b>	

Cruise Ship Calls	423	442	539	395	440
-------------------	-----	-----	-----	-----	-----

TOURIST ACCOMMODATION (Rooms)

Type of Accommodation	2002	2003	2004	2005	2006
Hotels	} 4984	2663	n.a	4937	
Apartment Hotels		2326	n.a	1245	
Apartments & Cottages	1589	1071	n.a	0	
Guest Houses	169	150	n.a	171	
<b>TOTAL</b>	<b>6742</b>	<b>6210</b>	<b>0</b>	<b>6353</b>	<b>0</b>

Source: Barbados Statistical Service

## BELIZE

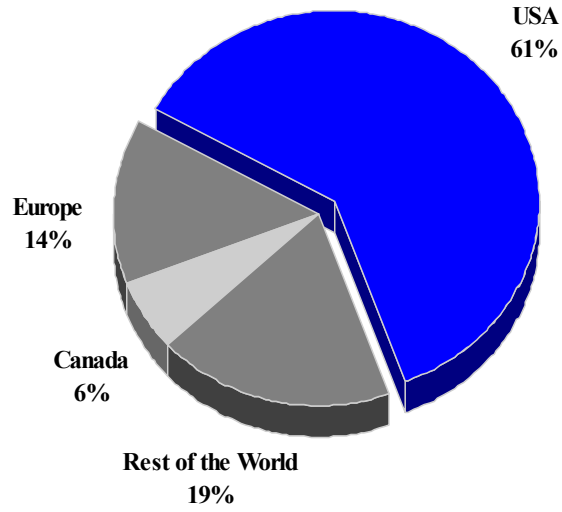
### TOURISM HIGHLIGHTS FOR 2006

VISITOR ARRIVALS			
Tourist Arrivals ➔	247,309	Cruise Passenger Arrivals	655,931
➔ <i>Winter</i>	40.4%	➔ <i>Winter</i>	47.8%
➔ <i>Summer</i>	59.6%	➔ <i>Summer</i>	52.2%
		Cruise Ship Calls	295
VISITOR PROFILE			
Average Length of Stay ( <i>nights</i> )	6.8	<b>Tourist Arrivals by Place of Stay <sup>1</sup></b>	
<b>Tourist Arrivals by Purpose of Visit</b>		➔ <i>Hotels</i>	64.7%
➔ <i>Holiday</i>	94.7%	➔ <i>Guest House/Apartment</i>	19.1%
➔ <i>Business</i>	5.3%	➔ <i>Private</i>	9.1%
		➔ <i>Other</i>	7.1%
TOURISM AND OTHER RELATED ECONOMIC STATISTICS			
Total Expenditure ( <i>US\$ millions</i> )	\$205.2	GDP at Factor Cost ( <i>US\$millions</i> )	\$917.6
Tourism Budget ( <i>US\$ thousands</i> ) <sup>bf</sup>	\$4,838	Consumer Price Index ( <i>% ch. 2004/'03</i> )	3.2%
Hotel & Restaurant contribution to GDP	4.4%		
ACCOMMODATION STATISTICS		SOCIO-ECONOMIC STATISTICS	
Rooms	5,151	Land Area ( <i>square Kilometres</i> )	22,966
Room Occupancy Rates	40.7%	Population ( <i>thousand mid year 2004</i> )	282.6

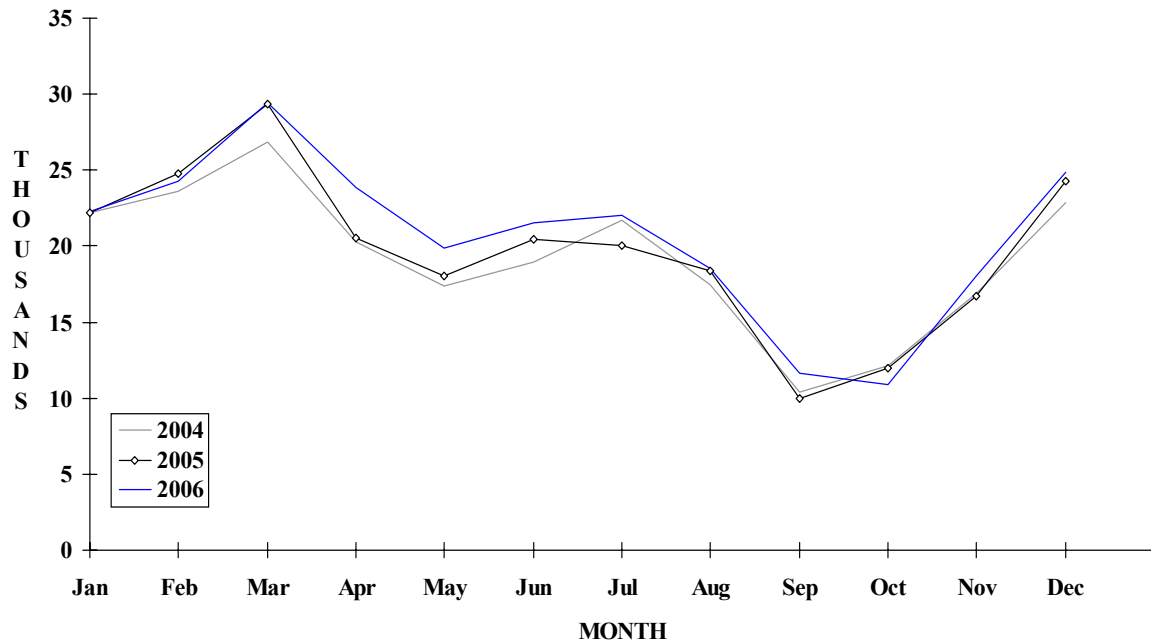
<sup>1</sup> *Source: Belize 2000, Visitor Expenditure and Motivation Survey*

# BELIZE

## TOURIST ARRIVALS BY MAIN MARKETS 2006



## MONTHLY TOURIST ARRIVALS



## TOURIST ARRIVALS BY COUNTRY OF RESIDENCE

Country of Residence	2002	2003	2004	2005	% Share	
					2006	2006
United States	104603	127288	137367	145977	151510	61.3
Canada	9185	9831	11926	13580	15553	6.3
Europe	29115	33530	32767	33466	34373	13.9
Rest of World	56618	49925	48772	43550	45873	18.5
<b>TOTAL</b>	<b>199521</b>	<b>220574</b>	<b>230832</b>	<b>236573</b>	<b>247309</b>	<b>100.0</b>

## MONTHLY TOURIST ARRIVALS

Months	2002	2003	2004	2005	% Change	
					2006	2006/05
January	17820	19648	22166	22165	22264	0.4
February	19377	20412	23645	24734	24278	-1.8
March	23388	24460	26817	29321	29415	0.3
April	17027	19660	20320	20503	23888	16.5
May	16106	17967	17386	17999	19898	10.6
June	16953	19228	18939	20460	21572	5.4
July	18011	20670	21734	20062	22024	9.8
August	16184	19689	17479	18335	18498	0.9
September	8634	9975	10432	10013	11626	16.1
October	10397	11524	12167	12011	10883	-9.4
November	15603	16313	16873	16711	18079	8.2
December	20021	21028	22874	24259	24884	2.6
<b>TOTAL</b>	<b>199521</b>	<b>220574</b>	<b>230832</b>	<b>236573</b>	<b>247309</b>	<b>4.5</b>

*Note: Tourist arrivals for Belize excludes border traffic from Guatemala and Mexico who enter Belize daily to conduct trade. This data broken down by month and market is available from 1998 only*

## CRUISE PASSENGER ARRIVALS

Months						% Change	
	2002	2003	2004	2005	2006	2006/05	
January	18448	56689	94861	94774	79077	-16.6	
February	19056	48172	87532	96667	77569	-19.8	
March	21822	54151	89807	122802	94631	-22.9	
April	23989	46401	72260	73327	62399	-14.9	
May	22973	24413	50642	48013	27346	-43.0	
June	17473	33623	57160	55432	35335	-36.3	
July	20502	30602	56794	33140	29443	-11.2	
August	16072	38809	57018	48518	33875	-30.2	
September	23095	31430	45132	32554	21431	-34.2	
October	33810	47356	58961	23481	32551	38.6	
November	46377	70377	77579	73175	74960	2.4	
December	56073	93173	103690	98448	87314	-11.3	
<b>TOTAL</b>	<b>319690</b>	<b>575196</b>	<b>851436</b>	<b>800331</b>	<b>655931</b>	<b>-18.0</b>	
Cruise Ship Calls	200	315	406	370	295		

## VISITOR ACCOMMODATION (Rooms) BY AREA

Area	2002	2003	2004	2005	2006
Belize District	897	943	884		
Ambergris	1111	1204	1228		
Cayo District	716	752	2233		
Caye Caulker	453	480	515		
Other	1528	1671	291		
<b>TOTAL</b>	<b>4705</b>	<b>5050</b>	<b>5151</b>	<b>0</b>	<b>0</b>

Source: Belize Tourist Bureau, Central Statistical Office



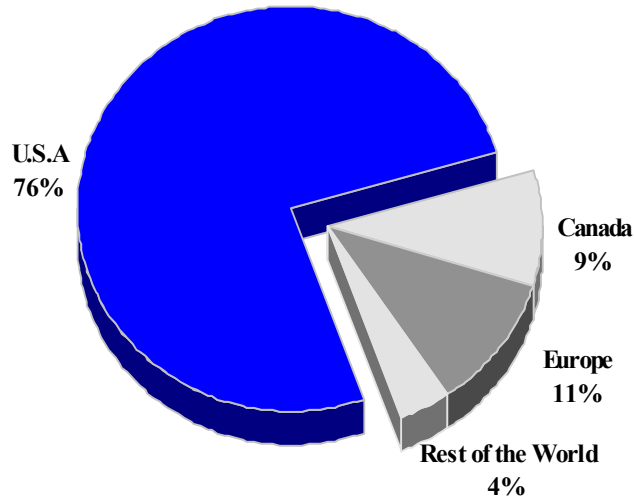
## BERMUDA

### TOURISM HIGHLIGHTS FOR 2006

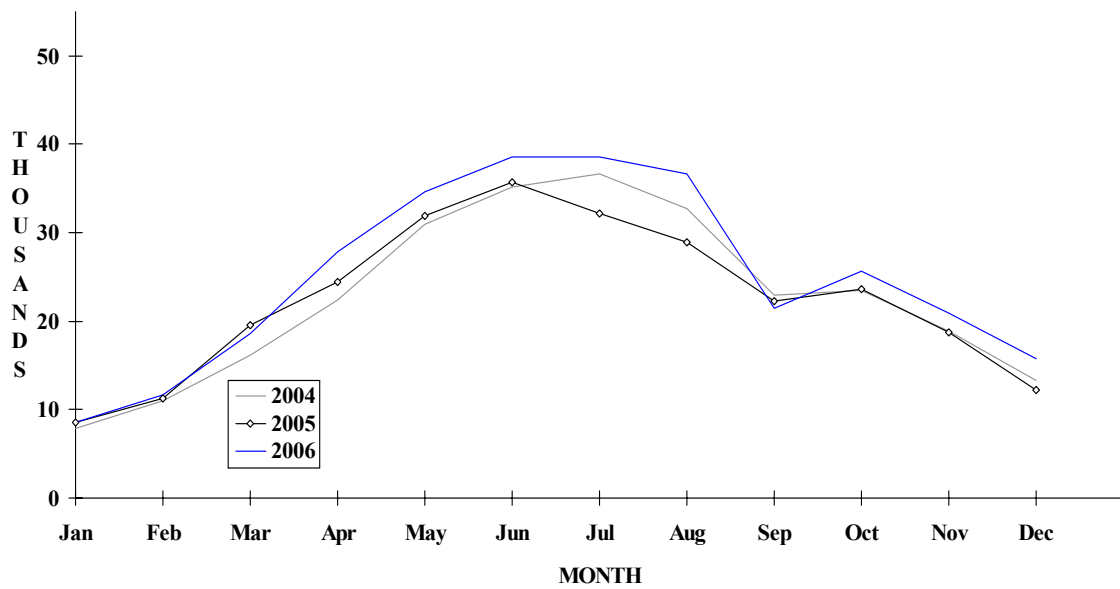
VISITOR ARRIVALS			
Tourist Arrivals ➔ ➔ <i>Winter</i> ➔ <i>Summer</i>	298,973 22.3% 77.7%	Cruise Passenger Arrivals ➔ <i>Winter</i> ➔ <i>Summer</i> Cruise Calls Yacht visitors	336,299 6.2% 93.8% 185 6,445
VISITOR PROFILE			
Average Length of Stay ( <i>nights</i> )  Tourist Arrivals by Purpose of Visit ➔ <i>Holiday</i> ➔ <i>Business</i> ➔ <i>Other</i>	6.4  79.6% 20.5% -	Tourist Arrivals by Place of Stay ➔ <i>Hotels</i> ➔ <i>Guest House/Apartment</i> ➔ <i>Private</i> ➔ <i>Other</i>	56.4% 19.8% 23.5% 0.3%
TOURISM AND OTHER RELATED ECONOMIC STATISTICS			
Total Expenditure ( <i>US\$ millions</i> ) Tourism Budget ( <i>US \$ thousands</i> ) <sup>1b</sup>	\$353.7 \$35,900	Consumer Price Index ( <i>% ch. 2004/'03</i> ) GDP at Factor Cost ( <i>US\$ million</i> )	3.6% \$4,505.3
ACCOMMODATION STATISTICS		SOCIO-ECONOMIC STATISTICS	
Rooms Room Occupancy Rates	2,939 62.4%	Land Area ( <i>square Kilometres</i> ) Population ( <i>thousand mid year 2003</i> )	53 62.0

# BERMUDA

## TOURIST ARRIVALS BY MAIN MARKETS 2006



## MONTHLY TOURIST ARRIVALS



## BERMUDA

## TOURIST ARRIVALS BY COUNTRY OF RESIDENCE

Country of Residence	2002	2003	2004	2005	% Share	
					2006	2006
United States	217868	197911	209054	204005	227725	76.2
Canada	25882	24485	26491	28668	27675	9.3
United Kingdom	25595	21665	21431	22446	27008	9.0
Other Europe	5063	4271	4439	4233	5339	1.8
Rest of World	9561	8244	10202	10235	11226	3.8
<b>TOTAL</b>	<b>283969</b>	<b>256576</b>	<b>271617</b>	<b>269587</b>	<b>298973</b>	<b>100.0</b>

## MONTHLY TOURIST ARRIVALS \*

Months	2002	2003	2004	2005	% Change	
					2006	2006/05
January	8804	8194	7826	8523	8594	0.8
February	12780	11065	11049	11311	11716	3.6
March	20196	18432	16193	19581	18586	-5.1
April	27466	25002	22429	24420	27874	14.1
May	33979	33064	31029	31978	34625	8.3
June	35202	35333	35216	35707	38634	8.2
July	35835	35914	36657	32190	38529	19.7
August	33498	35045	32669	28947	36650	26.6
September	21939	11260	22896	22331	21474	-3.8
October	23979	18979	23447	23665	25700	8.6
November	17894	13259	18923	18743	20887	11.4
December	12397	11029	13283	12172	15704	29.0
<b>TOTAL</b>	<b>283969</b>	<b>256576</b>	<b>271617</b>	<b>269568</b>	<b>298973</b>	<b>10.9</b>

\* Excluding ship/air visitors. Due to a report conflict the monthly numbers are missing a small number of arrivals.

## BERMUDA

## CRUISE PASSENGER ARRIVALS\*

Months						% Change	
	2002	2003	2004	2005	2006	2006/05	
January	0	0	0	0	0	-	
February	0	0	0	0	425	-	
March	585	136	743	497	0	-100.0	
April	5669	9542	11792	6952	20311	192.2	
May	29232	32489	31830	41045	49075	19.6	
June	37085	33660	32744	34776	53174	52.9	
July	36526	43527	33064	32287	63346	96.2	
August	29826	46674	42449	45981	67459	46.7	
September	28543	26620	25782	33759	33662	-0.3	
October	29790	28825	23185	35364	39240	11.0	
November	2809	4073	4023	15669	9306	-40.6	
December	0	551	521	929	301	-67.6	
<b>TOTAL</b>	<b>200065</b>	<b>226097</b>	<b>206133</b>	<b>247259</b>	<b>336299</b>	<b>36.0</b>	

Cruise Ship Calls	145	156	158	161	185
-------------------	-----	-----	-----	-----	-----

\* Including ship/air visitors

## TOURIST ACCOMMODATION (Rooms)

Type of Accommodation	2002	2003	2004	2005	2006
Hotels	2859	1324	2085	2147	n.a
Apartments	212	252	252	233	n.a
Cottage Colonies	71	326	434	516	n.a
Guest Houses	68	n.a	n.a	n.a	n.a
Clubs/Other	41	n.a	n.a	n.a	n.a
<b>Total</b>	<b>3251</b>	<b>1902</b>	<b>2771</b>	<b>2896</b>	<b>0</b>

Source Bermuda Department of Tourism

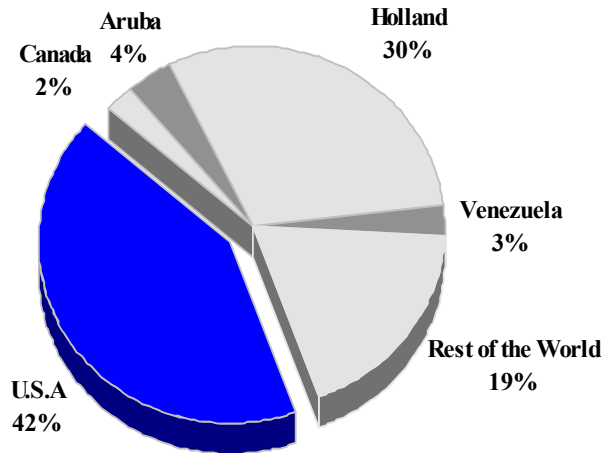
## BONAIRE

### TOURISM HIGHLIGHTS FOR 2006

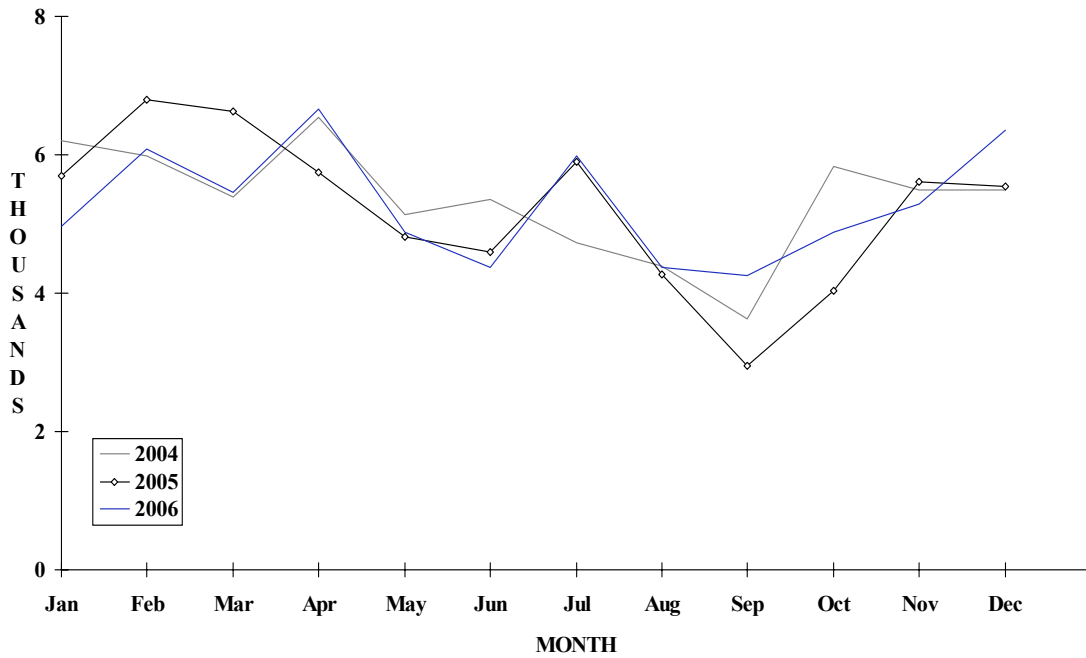
VISITOR ARRIVALS			
Tourist Arrivals ✈	62,550	Cruise Passenger Arrivals	40,077
➡ <i>Winter</i>	39.8%	➡ <i>Winter</i>	48.9%
➡ <i>Summer</i>	60.2%	➡ <i>Summer</i>	51.1%
Same day Visitors		Cruise calls	89
VISITOR PROFILE			
Average Length of Stay ( <i>nights</i> )	n.a	<b>Tourist Arrivals by Place of Stay <sup>III</sup></b>	
<b>Tourist Arrivals by Purpose of Visit</b>		➡ <i>Hotels</i>	n.a
➡ <i>Holiday</i>	n.a	➡ <i>Guest House/Apartment</i>	n.a
➡ <i>Business</i>	n.a	➡ <i>Private/Unregistered</i>	n.a
➡ <i>Other</i>	n.a	➡ <i>Other</i>	n.a
TOURISM AND OTHER RELATED ECONOMIC STATISTICS			
Total Expenditure ( <i>US\$ millions</i> )	\$83.7	Tourism Budget ( <i>US\$ thousands</i> )	\$1,676
		Consumer Price Index ( <i>% ch 2004/'03</i> )	1.8%
ACCOMMODATION STATISTICS		SOCIO-ECONOMIC STATISTICS	
Rooms	1,175	Land Area ( <i>square Kilometres</i> )	288
Occupancy Rate	61.0%	Population ( <i>thousand mid year 2004</i> )	10.2

# BONAIRE

## TOURIST ARRIVALS BY MAIN MARKETS 2006



## MONTHLY TOURIST ARRIVALS



## TOURIST ARRIVALS BY COUNTRY OF RESIDENCE \*

Country of Residence	2001	2002	2003	2004	2005	% Share 2005
U.S.A.**	26357	26500	25228	26623	25363	40.5
Canada	1098	593	843	1175	1157	1.9
Aruba	1191	2162	2493	2690	2018	3.2
Holland	11860	12814	19987	19506	20676	33.1
Germany	1511	1602	2236	1868	2072	3.3
Venezuela	3462	2150	1725	1633	1632	2.6
Rest World ***	4916	6265	9667	9661	9632	15.4
<b>TOTAL</b>	<b>50395</b>	<b>52086</b>	<b>62179</b>	<b>63156</b>	<b>62550</b>	<b>100.0</b>

\* Excluding arrivals from Netherlands Antilles

\*\* Including Puerto Rico

\*\*\* Including arrivals from other European countries: 2787 in 2000, 2955 in 2001, 3736 in 2002, 6856 in 2003 and 6539 in 2004.

## MONTHLY TOURIST ARRIVALS

Months	2001	2002	2003	2004	2005	% Change 2005/04
January	5595	3385	4612	6201	5702	-8.0
February	5094	4976	5693	5982	6798	13.6
March	5645	5568	5277	5391	6623	22.9
April	5243	3446	6045	6539	5742	-12.2
May	3710	3571	4216	5130	4808	-6.3
June	3729	3720	4317	4352	4599	5.7
July	4093	4540	5544	4736	5897	24.5
August	4036	3704	4558	4387	4272	-2.6
September	2661	3766	4401	3624	2942	-18.8
October	3756	4541	5648	5836	4029	-31.0
November	3730	5118	6081	5492	5603	2.0
December	3103	5751	5787	5486	5535	0.9
<b>TOTAL</b>	<b>50395</b>	<b>52086</b>	<b>62179</b>	<b>63156</b>	<b>62550</b>	<b>-1.0</b>

## CRUISE PASSENGERS

Months	2001	2002	2003	2004	2005	% Change 2005/04
January	8116	7277	7545	11484	5049	-56.0
February	6704	7778	8153	9259	5164	-44.2
March	9135	7555	8944	5388	8004	48.6
April	2998	3915	2903	3603	1383	-61.6
May	72	0	225	346	550	59.0
June	0	348	597	0	1406	-
July	78	485	220	574	1166	103.1
August	313	860	650	477	1039	117.8
September	621	775	763	390	765	96.2
October	1786	1482	890	774	584	-24.5
November	4719	4812	5101	7715	5999	-22.2
December	5993	6894	8610	13333	8968	-32.7
<b>TOTAL</b>	<b>14790</b>	<b>42181</b>	<b>44601</b>	<b>53343</b>	<b>40077</b>	<b>-24.9</b>
Cruise calls	71	64	81	72	78	

## TOURIST ACCOMMODATION (Rooms)

Type of Accommodation	2001	2002	2003	2004	2005
Hotels	741	n.a	n.a	n.a	n.a
Apartments	146	n.a	n.a	n.a	n.a
Condominiums	-	n.a	n.a	n.a	n.a
Other	114	n.a	n.a	n.a	n.a
<b>TOTAL</b>	<b>1001</b>	<b>1070</b>	<b>1070</b>	<b>1175</b>	

Source: Bonaire Government Tourist Bureau